



OPUNAKE & COASTAL NEWS

Vol. 25 No 9, May 20, 2016
www.opunakecoastalnews.co.nz

Published every
Thursday Fortnight

Phone and Fax 761-7016
A/H 761-8206
for Advertising and Editorial
ISSN 2324-2337, ISSN 2324-2345

Inside

Forever grateful for friend's bravery and quick thinking

Lindsay Calvert will never forget the day Bruce Field saved his life. It was December 14, 2014 and Lindsay was cutting some trees on Graham Cowie's Rahoitu property. In a freak accident, a felled tree had rolled on top of Lindsay, and Bruce, using a Stihl 029 chainsaw cut him free.

Since then Bruce rings Lindsay up most days just to make sure he is alright. Lindsay has always been grateful to his rescuer and has just put together a certificate to give to Bruce acknowledging his bravery and quick thinking on that day.

Lindsay is a three times national chainsawing champion and has been tutoring safety courses for the last 25 years.

On that day, Lindsay was getting over a hip replacement operation he had had three months earlier. Bruce had received his chainsaw certificate seven years before, so Lindsay brought him along to clean up and keep an eye on him.



Lindsay Calvert (left) with his rescuer Bruce Field and the chainsaw he used to cut him free.

Everything happened in a split second, Lindsay said. "I'm just so grateful to Bruce for saving my life. It would be the most unusual accident you would ever hear of. It was

not a particularly big tree, but it was heavy enough to do a hell of a lot of harm. It was a severe crush. A normal person would have frozen, but Bruce knew what to do." Bruce recalls what happened. "The accident happened right before my eyes. I couldn't leave him there. I had to cut him out. I said to him, you're not going to go now. I'm going to cut you out."

So he got to work with a chainsaw, which he said was

"no toy."
"If I didn't have the experience I couldn't have used the chainsaw, and if I didn't do everything right, it could have been me there as well. I had to move it off him so he could breathe. He was going very pale."

"More than pale," cut in Lindsay, "I was going blue." Bruce yelled for help, and land owner Graham Cowie got the paramedics in. Lindsay's numerous injuries included his pelvis being broken into seven pieces. Lindsay said that at one point he was clinically dead.

"Normally people don't recover from that accident. I have so much to be thankful for to the staff at the Waikato Orthopaedic Hospital. The surgeon said to me, you are a tough old bastard. You survived the accident and you survived the surgery. The nurses all lined up and gave me a hug."

After that Bruce was left to get used to his new status as local hero.

"I saved his life. If it came to it, I would have done it again," he said.

Meanwhile, Lindsay is getting on with life while pondering his brush with death.

"I've definitely used up four lives. I've also been pulled from the water three times. I've been asked to help with safety courses with some problem teenagers. It's nice to hear I still have some use."

Truck and trailer unit gets stuck

On the morning of May 6, a truck and trailer unit lost control while negotiating a corner of State Highway 45 at Tataraimaka. The truck left the road surface and was stuck on the soft shoulder with the trailer unit blocking the highway, a police spokesperson said.

Continued page 3



The truck stopped traffic on the Tataraimaka hill.

Right into Outdoor Power Equipment

STIHL

Time to get your Firewood!



\$1595 inc
MS 391

20" Bar. 64.1cm, 3.3 kw/4.5hp, 6.2kgs. Ideal for a range of tasks on the farm and felling large trees. With long life air filter system.

Free \$100 voucher to spend on anything instore

COLLINS SPORTS CENTRE
Tasman St, Opunake Ph: 761 8778

GYPSY DAY
IS NEARLY HERE!



Moving house? we have all you need including a **RUG DOCTOR** and all the necessary cleaning products to get the house clean.

Be in quick to book your Rug Doctor, advance bookings accepted

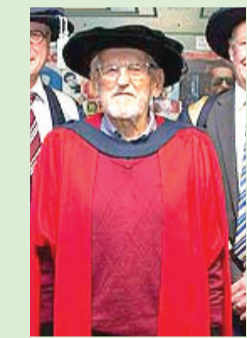


4 SQUARE 45
77 TASMAN ST
OPUNAKE
06 761 8668
OPEN 7am to 8pm EVERYDAY!

Snapping the baddies
What do you think.
Page 3.



Remnants of atom
bomb in paradise. Book
extract. Page 16.



Honorary doctorate
for Parihaka historian.
Page 10.



Changeovertime. Page 19.

Keeping warm this
winter. See our
Heating Feature page
13-15.

COASTAL MACHINERY SALES REPRESENTATIVE

JOHN JUDGE
Phone
027 538 7387
06 757 5582

For all your machinery enquiries

NORWOOD Farm Machinery Centre 146 GILL ST NEW PLYMOUTH PH 06 757 5582

The return of an old favourite

Two weeks into the revived *Mastermind*, *Opunake & Coastal News* journalist and former *Mastermind* finalist Bryan Kirk who has been watching the show commented that there is "something missing in the show."

Bryan was 23 when he finished third in the 1983 final, in which *Ida Gaskin* of *New Plymouth* finished first. He made it as far as the semifinals on his second attempt in 1988.

Despite his criticisms he's avidly following the series which screens on TVOne on Sunday night at 7:45pm. Bryan comments.

Peter Sinclair was always going to be a hard act to follow. Long standing fans of the show will recall his "I've begun the question, so I will finish," as well as his more infuriating "I thought you would have known that."

Still, if anyone was going to try to follow in the great man's footsteps, veteran broadcaster Peter Williams would be as good a person as any.

It's a pity that the makers of the current show have felt the need to alter what has been a winning formula. Gone is the haunting *Approaching Menace* theme. The questions are a lot longer, so that a score of 8 is considered a good one in your specialist subject. With the traditional format, scores of 15 or more were not uncommon. In my 1983 heat, I had scored 19 on my specialist subject. Five years later in my semifinal I was

up against a doctor from the West Coast, who in his heat had racked up 21 points on the history of symphony music. That would not be possible today.

Questions back then were shorter and snappier, racking up both the scores and the tension. It also made better television. We were told that we had to wait until the quizmaster had finished the question, so we couldn't anticipate. I assume the current crop of contestants have been given the same instructions. Again, that is a pity.

The waters have further been muddied with the addition of a third New Zealand round. With the traditional format, a specialist in one area who may not be so knowledgeable about much else could often come unstuck in the second round. Now general knowledge is less important, accounting for only about a third of the potential points, leaving another narrower field of knowledge to avoid being really exposed in the general knowledge round.

The original format had been devised by the BBC and translated well to a number of countries including New Zealand. There was even for a time an International *Mastermind*, whose winners have included New Zealander David Harvey and Chris Hughes, a familiar face to fans of the quiz series *Eggheads*, which has shown in New Zealand on UKTV.

Admittedly, even in the



Bryan Kirk assesses the updated version of a quiz favourite

good ol' days, we didn't always stick to the original format. In Britain contestants have to choose a different specialist subject after the heats, while in New Zealand, we could stick with the same

subject all the way through.

Criticisms aside, it's good to see a series which I have grown up return to our screens. Long may it continue.

Send your your views to:
Letters to the Editor
23 Napier Street, Opunake.
Fax: (06) 761 7016

email: editorial@opunakecoastalnews.co.nz
You are welcome to use a pseudonym but must supply your name and address to us.



Is this the right way? The sign which should point to Coastal Care and the public toilets points in the direction of Hawera. No wonder the Opunake and Coastal News has had to field at least one query as to the location of the public conveniences.

BBC: Birth

We are born into this world alive and kicking, but what the Bible tells us is that we are not. Oh yes we are physically alive, but we are not spiritually alive.

In John 3, Jesus talks with Nicodemus, a religious leader of the time. Having been told he must be born again, Nicodemus scoffs that it is impossible. A grown man cannot enter into his mother's womb a second

time and be born again.

Jesus says that a person must be born of the water and the Spirit.

Water baptism is important, and then there is spiritual baptism. We need both.

In the Exodus story the people of Israel had to follow Moses through the Red Sea. The water was a wall either side of them. Their past life of slavery is signified by Pharaoh and his

armies, who attempted to recapture them. And this is what correct water baptism does for Christians today. Our past is destroyed and we can start a new life.

The very same water that opened to allow God's people through was the means of destruction of the Egyptians. So the Israelites, as a nation, were born of the water.

Later there came a time

when the people of God were told to go and take the Promised Land. But they wouldn't do it. They refused to follow God's Word.

This led to a forty year wandering in the wilderness. So even those who had the right baptism didn't put their faith into practice, and it cost them everything. As Hebrews 3 verses 16-18 says, God was so annoyed with His people who wouldn't believe His Word that He let that generation die in the wilderness.

They were not born spiritually. They had not lived by faith.

And that can be our problem today. We can have our churches, our meetings and our prayer times, but if we cannot trust God enough to walk by faith on our own and fulfill our calling, then we have not fully been born again.

We need to be spiritually alive to live the life Christ has called us to.

Richard Oliver
Pastor Eltham Message Church
www.messagechurch.com

Headstone Warehouse
WHERE YOU GO FOR HEADSTONES

33 High Street,
HAWERA - Ph: 06 278 5518

209 Coronation Ave,
NEW PLYMOUTH - Ph: 06 759 9975

www.HeadstoneWarehouse.co.nz
EXCEEDING THE STANDARD SINCE 1914

RENTAL VEHICLES

- CHARTER BUSES
- VANS
- TOUR BUSES

ALUMINIUM SCAFFOLDING FOR HIRE
\$35 per day, \$50 weekend.
More than 6 days \$30 per day.

WATERBLASTER FOR HIRE
Petrol 3000 psi 15L/minC
Cost: Half day \$90, Full day \$120, Weekend \$130. Friday after 3pm return Monday 9am.
Bond for waterblaster and scaffolding \$50.
For more information contact Tracey or Christine at

PICKERING MOTORS
11 TENNYSON ST OPUNAKE PH (06) 761-8363
0800 22 11 20 Email: pickering.motors@xtra.co.nz

MEETINGS:
Sundays at 38 Tayler Street, Eltham at 10.30am.
Phone 06 764 7358 for other Bible Studies.

Eltham Message Church
Pastor Richard Oliver
We are an independent Bible Believing Church
All are most welcome
www.messagechurch.com

OPUNAKE & COASTAL NEWS

Registered office: 23 Napier Street, Opunake
PO Box 74, Opunake

Telephone and Fax: (06) 761-7016 a/h ph: (06) 761-8206

e-mail: Advertising ads@opunakecoastalnews.co.nz
Editorial editorial@opunakecoastalnews.co.nz
Accounts accounts@opunakecoastalnews.co.nz

website: www.opunakecoastalnews.co.nz

Editor: Bernice M'Kellar - Rolland M'Kellar
Journalists/Sales: Bryan Kirk

Advertising/Production: Vanessa Smith
Tina Chapman
Thursday, fortnightly

Delivery: Registered as a newspaper.

The Opunake and Coastal News is distributed free to every home and business within the rural area bounded in the north by the New Plymouth city border, extending east to Egmont Village, and around to the edge of Stratford, south to the Hawera city border and inland to Kaponga and through Eltham.

HEARTLAND CONSTRUCTION
48 Allison Street - Opunake - Taranaki - Phil on 027 236 7129

- New Houses
- Alterations
- Roofing
- All Farm Buildings
- Kitchens
- Decks

For all your building requirements, contact us today



Truck and trailer unit gets stuck

Continued from page 1

A member of the public notified police just before 7.50am. Nobody was injured, and the driver of the truck was out of his vehicle at the time police received the phone call. Contractors were called in to assist in removing the trailer unit from the scene.

It had been raining earlier that day, and the road at the time was wet. The highway was blocked to traffic for about two hours.

Constable Rob Keen of the Taranaki Highway Patrol Central District Road Policing Group said what happened serves as a timely lesson for drivers everywhere..

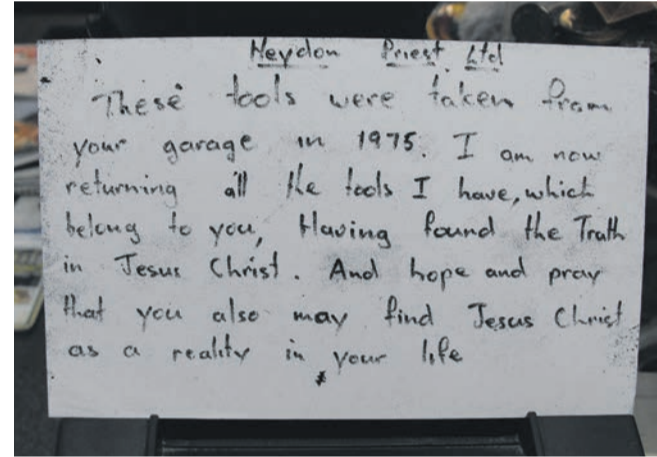
“As the season comes into winter, we are going to see more high winds and rain, so drivers need to alter their behaviour to the conditions. This applies to all drivers on all roads at all times.

Is there a case for security cameras in Opunake?

As part of research into a possible upcoming article on security camera installation in Opunake we are running a poll to get some public opinion and feedback on the issue. Please complete the poll below and drop it off to the Opunake & Coastal News

offices in Napier Street. The poll is also available to be completed on our website at <http://opunakecoastalnews.co.nz/scpoll2016.html>.

It would be helpful if the poll is completed by the 26th of May.



Thief comes clean

An intriguing note is on display at the counter at Heydon Priest which owner Ash says he received some time in the 1970s.

Apparently the author had stolen some tools from Heydon Priest garage at Oakura and in a fit of conscience later returned them.

Ash had no idea who took the tools which arrived in a parcel accompanied by the note.

“We had been robbed and robbed and robbed,” says Ash adding that theft was rife at that time.

Later installing alarms seemed to reduce the robberies. Says Ash it was nice to get the tools back with the apologetic note and restored his faith in human nature.

1) Would you support or oppose the installation of a new security camera system in Opunake?

- Support Oppose Don't know

2) Why do you support, or oppose, the installation of new security cameras?

3) Where would you like to see security cameras installed in the town?

4) Who should pay for the purchase and installation of a new security camera system? Multiple answers are allowed

- Opunake Business Association Egmont Plains Community Board South Taranaki District Council
 New Zealand Police Central government Locals through fundraising Other

5) Who should pay for the on-going costs of a new security camera system? Multiple answers are allowed

- Opunake Business Association Egmont Plains Community Board South Taranaki District Council
 New Zealand Police Central government Locals through fundraising Other

6) What privacy concerns, if any, do you hold about the installation of security cameras in Opunake?

7) Please add any additional comments you have about security cameras in Opunake



MOTUROA LOCKSMITHS

For your
Lock Repairs
New Installs
Key Cuts
Car Lockouts

Farmers, Townies or Industrial!

491 St Aubyn St, Moturoa, New Plymouth
Phone: 06-751 0900
www.thelocksmith.co.nz



COUNCILLORS COMMENT

The fate of the brave

Kia ora from sunny Eltham, hope you are well in the face of big change and news. The item that caused the largest alarm here was the announcement from local police that they are now spending hours on suicide. Remember that things can get better as quickly as they went bad, so just endure there people. Global warming s a terrible thing, but the warmest May in years also has benefits, so enjoy it.



Cr Alex Ballantyne

Where Arthur Mee and other encyclopaedias informed us of the wonders of science and the US, now the History Channel educates us fully on the horrors that widespread racism unleashed. Andrew Judd now suffers the fate of the brave, while the Dons

(Trump and Brash) have reminded us of the vote-winning capabilities of the horror that slaughtered tens of millions not long ago.

We're a small country, but we can still lead. Among other things we led on votes

for women. Let's continue to take the higher path.

We were officially told years ago to help 'smooth the pillow of a dying race.' But it's not dying. And never will. It's growing, an essential and surely welcome

culture that deserves to be feted and preserved.

Well done Andrew, and all who support him.

Cr Alex Ballantyne, Eltham -K aponga ward, \$ DC

Management plan for green spaces

Work is about to begin on creating a management plan for the majority of public green spaces in New Plymouth District.

About 300ha of land owned by the Council will be included in the plan, with these areas ranging from reserves alongside walkways and streams, to green corridors and open spaces.

"The levels of service for these reserves are variable, ranging from bush remnants where we do very little intervention, through to Waitara's West Quay and Te Henui Walkway, with their paths and maintained lawns," says group manager strategy Liam Hodgetts.

"Taken as a whole, these green spaces contribute significantly to the quality of our lifestyle.

"Through the management plan we'll identify the purpose of each green space and, where it's appropriate, we'll identify opportunities to enhance these spaces through specific projects."

The creation of a Green Spaces Management Plan has been approved by the

Council's Policy Committee. In June the public will be asked about what should be included in the plan, and public consultation on the draft plan will take place in early 2017.

Currently there are management plans in place for significant parks and reserves, such as Pukekura

Park and coastal reserves, as well as sports grounds, cemeteries and historic reserves. The Green Spaces Management Plan will cover most of the rest of the green spaces in the district, with the exception of grazing areas, pine forests, halls and land that has been identified for disposal.

Continuing a family tradition



Ian and Judith Armstrong's younger daughter Ellen was married at The Old Church in Taradale on January 29 to Darin Godber. Ellen and Darin have made their home in Wellington. At both daughters' weddings the bride wore the necklace Judith's mother wore for her wedding in 1954.

BRANDERSON HOMES LTD

PRE BUILT HOMES

**OFFICE LOCATED AT: 37 HAUTAPU ROAD
CAMBRIDGE
TELEPHONE 07 827 3901**

email: branderson.homes@xtra.co.nz - website: www.brandersonhomes.co.nz

Please send us an information pack about your Transportable Pre-Built Homes

Name: _____ Ph No: _____

Address: _____ Style/Size: _____

Please mail to : Branderson Homes Ltd, PO Box 434, Cambridge, 3450

MOBILITY & MORE 2010 LTD
0800 765 763
TARANAKI WIDE SALES & SERVICE

**Taranaki wide sales, hire and service.
Free delivery, competitive prices.**

**MOBILITY SCOOTERS
and all living aids - we'll help you
with whatever you need.**

Kevin & Marilyn Bromell
154 PRINCES ST - HAWERA
Ph: 06 278 8072 - Freephone 0800 765 763
www.mobilityandmore.co.nz

Pennington's

BOOKKEEPING & BUSINESS SERVICES

DAILY

Data Entry

- Accounts Receivable
- Accounts Payable
- Bank Reconciliations
- And More

MONTHLY

Reports

- Profit & Loss
- Budget Variance
- GST Returns
- Bank Reports and more

ANNUALLY

Compliance & Planning

- Year End Accounts Ready for Tax Accountant
- Budget and/or Business Plan and more

Plans start from \$99 per month... and we can come to you!

How The Other Half Loves

New Plymouth Repertory's latest offering *How the Other Half Loves* by British playwright Alan Ayckbourn was huge fun.

The plot centres around two couples Fiona (played by Gillian Somers) and Frank (Morris West), and Teresa (Vanessa Harrison) and Bob (Jarrod Campbell).

Fiona and Bob are having an affair. A third couple, the meek Mary (Anna Zsigovits) and her unassuming husband William (Terry Darby) however unwittingly get drawn into the subterfuge when the guilty Fiona, to explain her absence to her husband implicates Mary. Meanwhile Bob

and Teresa who have a new baby are continually fighting and Teresa has her own suspicions about Bob's working late. Bob in turn implicates William who he claims is worried that his wife Mary is having an affair. Things get really complicated and very funny when the unsuspecting Frank gets the wrong end of the stick and believes it is Mary who is having an affair with Bob. Confusion reigns supreme till the nervous Mary – a less likely candidate for an affair than could be imagined – finally indignantly asserts herself and demands an apology from her accusing husband. The guilty pair

also gain a new appreciation of their partners who wind up with the upper hand.

There was a message there as in other works by the brilliant playwright. It was British farce at its very best and sensitively directed by Fleur Coombe.

All the characters were finely drawn and thoroughly convincing.

Mary nervously chewing her nails and her mild, self important husband due to be promoted in accounts, are a perfect foil for the two other sophisticated couples. I warmed to them. The couple having an affair displayed the perfect combination of deceit

and discomfort as they try to continue their affair without detection while Teresa gave a great performance as the angry suspicious spouse. Morris West as Frank was a likeable bumbling figure in his misguided ignorance.

The action takes place concurrently which makes for an interesting, if occasionally confusing dynamic especially when joined by the third couple invited for tea by each of the couples on successive nights.

An entertaining play and cleverly constructed, I enjoyed it immensely.

Bernice McKellar



Tensions rise at the dinner table

Trust signs off year on a high note

Despite a strong record of events around the province, The Music Innovation Trust of Taranaki (MITT) still feels it has something to prove, its director said in the trust's annual report.

"Looking through the finer statistics of MITT's engagements since it began work in January 2012, it is pleasing to report that MITT has now presented performances and events to over 100,000 people. From Waitara to Waverley, MITT has made a fundamental difference to the lives of many people in Taranaki. However, MITT continues to face the overarching challenge of continually proving itself in such a sport dominated area," the trust's executive officer Christopher Luke, who is also director of music at the Taranaki Cathedral said.

The previous year had been one of challenges.

"It was a year which saw many performances, events and Cathedral services to administer, rehearse and perform for. A year which saw the difficult and emotional decision being made by the Taranaki Anglican Trust Board to close the Taranaki Cathedral Church of St Mary for earthquake remediation.

A year where children's lives were engaged with the artistic brilliance of some of New Zealand's leading performing musicians and actors. A year which saw me travel to many parts of Taranaki allowing music to transform people's lives. A year which saw a new stakeholder come on board, and the retirement of a founding Trustee. A year which saw our very own district council make the decision to cut funding to the arts."

He said music had the potential to change lives.

"Current research reflects that in many parts of the world, 20 per cent of all children learn a musical instrument while 70 per cent of adults wish they did. Wouldn't it be a wonderful challenge to turn these statistics around. Research suggests that students who learn music will perform better both in social and academic circles. It improves concentration, listening skills (both internal and external), reading and comprehension ability, mathematical perception, co-ordination, time management and the ability to remain relaxed and focused.

Trust chairman Darrin Mugeridge said he was pleased with the trust's record in

2015.

"I believe the Music Innovation Trust of Taranaki has developed over the past 12 months to the point where it is fulfilling its purpose and making a difference. There will continue to be obstacles that we as a Trust need to overcome, but I am sure this can be done if we continue to work closely with the stakeholders, the Diocese and funding partners.

"Christopher Luke, the Director of Music, has once again, musically, completed another wonderful year whilst at the same time has committed to his executive role for the Trust very well.

The second Taranaki Performing Arts Conference (TPAC) which took place at Sacred Heart Girls' College, New Plymouth on April 14-16 last year was seen as one of the highlights, attracting 61 students, three teachers and eight observers, an 80 per cent increase on numbers attending the previous year.

Those attending included students from New Plymouth Girls' High School, New Plymouth Boys' High School, Sacred Heart Girls' College, Francis Douglas Memorial College and Spotswood College, as well

as junior musicians (mainly piano students) from local Intermediate and Primary schools, and home schooled students.

PROGRESSIVE
FENCING

FOR ALL YOUR FENCING REQUIREMENTS:
Agricultural & Electric, Fencing & Shelter Belts,
Stockyards, Retaining Walls, Residential,
180 Rev. Post Rammer.

Member FCANZ

Ph Steven on (06) 764-5393 or 021 298 5106

PAUL'S SECOND HAND SHOP

70 Bridge Street, Eltham

**BARGAINS
GALORE!**

 **Stepping
Stones**

Early Childhood Education Centre

We are now taking Enrolments for 2016.

Please ring Sarah on 06 752 4289 or
Sarah 027 322 3318

2502 Surf Highway 45, RD37, Okato

Coastal 027 255 8677
06 752 8138 **Welders**

**BOOK YOUR
WINTER SHED MAINTENANCE
NOW!**

Call today!

We are a local company training local people.
Email us at coastalwelders@xtra.co.nz
WAREA

 **Precision Helicopters Limited**
Precise in nature, action & performance
www.precisionhelicopters.com **Free Phone:**
0800 246 359
Nationwide



For all your helicopter requirements:

- Granular and liquid fertiliser
- Boom and spot spraying
- Fine Particle Suspension
- Wild animal control
- Mustering
- Lifting
- Hunting Trips
- Scenic Flights

Opunake Volunteer Fire Brigade news

We will soon be into the cooler months so I will give a few "Hot Tips for Cold Weather." Remember the heater metre rule - keep furniture, clothes and curtains at least one metre away from heaters and fire-places. Empty your fire place ashes into a metal container so they can cool down properly before disposing them. It is a good idea to get your chimney and flues cleaned at least once a year. The last hint that I will touch on in this publication is that you should always have a spark or fire guard around an open fire. This way you will keep the children and pets away from the fire, and keep

the sparks in the fire.

We were called to a fuse box fire at a cow shed on the Eltham Road on April 27. Luckily the owner and staff were able to extinguish the fire before it got out of hand and cause serious damage. That is the reason why we suggest you have a fire extinguisher handy, because if something of this nature occurs it can be dealt to immediately.

As hard as we try, we cannot always guarantee a quick response from the fire station, so it is wise to have your own systems in place to try to halt the fire, as much as you can, until we arrive.

On this occasion, we were struggling to get an appliance driver, so a crew grabbed some fire extinguishers and raced to the property in our fire support vehicle. When a driver arrived, the engine was dispatched with extra crew. This may seem a little like "Dad's Army," but only personnel who hold the correct heavy duty truck licence, have undergone the 36 hour Fire Service driver's course, and also hold a pump operators ticket are allowed to aim the fire engine. This was an extremely odd situation for us that not one of our drivers was immediately available, so we were thankful for the way it turned out for the owner.

The Kaponga Brigade were also called as back-up (because it was a property fire and they also need the practice), and their Thermal Imaging Camera (TIC) was used to check for any hot spots around the meter board. We took the camera's word when it gave a normal heat

reading and we all headed for home. TIC's are becoming a vital piece of equipment for fire brigades, so it is our intention to fund raise the \$4000 required to purchase one for ourselves. The NZ Fire Service does not supply these to small brigades like ours, so we will make it our priority in the future.

Sadly, both the Kaponga and our own fire brigade were called to the Patiki Road at Pihama on Mother's Day where we found the passenger from a Falcon car, deceased on the side of the road. The driver of the car had failed to take the corner and side swiped a power pole. The entire side of the vehicle had been opened up, as if it had been attacked it with a can opener. In situations like this, we care for patients until the St Johns ambulance crew arrive, protect the scene for the Police (because someone has died, the incident is classed as a homicide) by blocking off the road, and set up traffic

diversions. Both brigades were called back again later in the evening to assist the Forensic Investigators with scene lighting.

Members of the Kaponga and Opunake Fire Brigades wish to express their deepest sympathy to whanau and friends of the deceased.

The Rahotu Brigade, along with ourselves, was called out on Saturday 14th to a car versus motor bike incident near the 4 Square in Rahotu. The couple on the motor cycle received moderate injuries and were transported by the Opunake Ambulance to hospital. Maybe next time they're going past the Rahotu 4 Square they should call in and get a Lotto ticket.

Over the past month we have attended two deaths involving motor vehicles on the open road and two accidents in Rahotu. None of these incidents should have happened, and all could be put down to either driver inattention, speed, or both. I would not be surprised if the

Highway Patrol focused on the driving habits of people driving through the Rahotu town-ship in the near future. I believe foreign tourists must wonder what the sign leading into Rahotu from the northern end means, "School Ahead, No Excuses", but we all know the speed limit, so please stick under it.

On a happier note our Fire Chief Rodney Woods took a team from our brigade to the NZFS National Darts Tournament at Papamoa on the weekend of May 7-8. Simon Hitch came away with the Men's singles title, his wife Kaylah won the Women's singles title and Rodney, Paula and Kevin Phillips won the Plate Triples Title.

There were 22 teams of three entered in the competition, so this was an extremely wonderful haul of titles by our Opunake team. Congratulations Darts team.

The Flaming Dart

HARDINGS

FUNERAL SERVICES LTD
17 REGENT ST HAWERA

*Our professional attention to detail
& empathy is our hallmark*

PHONE 06 278 8633

SERVING OUR COMMUNITIES FOR 3 GENERATIONS

Second road death in as many months

Thirty seven year old Eltham man Komene Hetaraka died when the Ford Falcon Saloon in which he was a passenger hit a tree on the Patiki Road at around 2.30pm

on Sunday May 8. The driver of the vehicle suffered minor injuries and did not require hospital treatment. The Police Serious Crash Unit have been investigating.

This is the second road death in the Opunake area in as many months.

It comes just over a month after the car driven by 36

year-old Sioli Malili left the Wiremu Road and passed through the crash barrier of the Taungatara Stream bridge on April 6.

Suzy Cato takes stand against bullying

On Friday May 20, thousands of New Zealanders including children's entertainer Suzy Cato will celebrate Pink Shirt Day and speak up and stand together to stop bullying.

Over 300 individuals, schools, community groups, universities, businesses and workplaces are set to turn Aotearoa pink and combat bullying - a record number for the campaign.

Ms Cato, a passionate supporter of the campaign says, "Pink Shirt Day is about showing a united front, showing strength and showing support for each other, regardless of age, sex, gender identity, sexual orientation, ability, or



Suzy Cato

cultural background."

"We may have experienced bullying at some stage in our lives. We may have even participated in bullying or supported it without realizing. We can all play our part in preventing it," Ms Cato says. "Real change happens when we stand together and send a strong message that there is no place for bullying in New Zealand," she adds.

Today in New Zealand,

young people who identify as lesbian, gay, bisexual, transgender or intersex (LGBTI) experience high rates of bullying, particularly at school.

"Bullying in all its forms is unacceptable. We need to nurture inclusive environments where all young people feel safe and supported to be themselves," Ms Cato says.

Mental Health Foundation spokesperson, Moira Clunie says bullying is far too common in New Zealand and has significant and ongoing impacts on people's mental health and wellbeing.

"We know that students who are bullied are more likely to experience symptoms of depression and anxiety and avoid going to school. In the workplace, bullying harms workers' health, wellbeing and ability to do their job," Ms Clunie says.

"Pink Shirt Day shines a light on these serious issues and mobilises the community."

Rainbow Youth Executive Director Duncan Matthews says, "We hope that through education and campaigns like Pink Shirt Day our queer and gender diverse people can feel safer and more secure in all environments."

Those taking part in Pink Shirt Day will raise awareness of bullying while having fun running their own activities ranging from pink bake sales, morning teas, special school assemblies and skits, pledges, mufti days and more.

Pink Shirt Day is led by the Mental Health Foundation with support from The Peace Foundation, R a i n b o w Y O U T H , InsideOUT, New Zealand Post Primary Teachers' Association, Youthline and Family Works.

ANDREW PURSER
panelbeaters LTD

- Windscreen replacements & repairs
- Chassis Straightening
- Spoiler Kits fitted
- Private repairs ■ Rust proofing
- Plastic welding ■ Insurance work
- 24 hour towing

Courtesy vehicles available

FREE QUOTES

Ph/Fax (06) 278 8233
22 Cambria Street, Hawera
Mob 027 249 9489
A/Hrs (06) 278 7314
mr.fix@xtra.co.nz

Accident & Medical Clinic



Clinic hours 8am-8pm
No appointment needed
24 hr urgent medical care
X-ray
Pharmacy

OPEN EVERY DAY

Richmond Centre
8 Egmont St New Plymouth Ph(06) 759 8915

ACC and RNZCGP Accredited

SINCLAIR

FARM KILL AND PROCESSING

• Beef • Sheep • Pigs

Call Colin or Bridgitte - 06 765 4460 • 0274 629 282

121 Cordelia Street, Stratford



New principal has strong Taranaki links

Until now Kerry Nancarrow's entire teaching career has been at Stratford Primary School. Sixteen years ago she started as the beginner teacher, and then worked her way up to deputy principal, then acting principal. This term, she has finally left Stratford Primary, which has a roll of 400, to become principal at Matapu, which has five teachers and a roll of 120.

"I'm already loving it. We have such awesome students and staff, so honest, so positive, so motivated," she said.

Kerry takes over from Jarad Chittenden, who has taken over from his brother Heath as principal of Auroa School.

Kerry comes from a Taranaki farming background, having done her schooling at Pungarehu Primary and



The new principal Kerry Nancarrow with students at Matapu School.

Opunake High Schools. Her three children, now all in their 20s attended Kaimata School near Inglewood.

"I had been farming for many years, then thought I would like to teach, and I've never looked back," she said.

She says she is looking forward to taking an active

interest in the Matapu School and community, as well as the MOA Kluster of schools, of which Matapu is part.

"I want to respect the cultures and traditions already here, but I want to be innovative and creative in moving forward," she said.

Ethel Anne Antiques
Autumn Sale
25% off all stock

35 years in business

Open Weekdays 9.30am till 5.00pm
and weekends 9.30am till 4pm

Cnr Princes St & South Rd - HAWERA
Ph: 06 278 7238 - A/hrs: 06 274 8041

Four Square have new owners in Opunake

Last owner Bryce has headed to pastures new and the Four Square at 59 Tasman Street, Opunake has been taken over by Gary and Nancy Arora. The couple took over on May 2 and so far it's going very well, with lots of positive feedback from customers. Before heading south to Opunake Gary and Nancy ran Four Square supermarket in Hamilton.

Several months ago the couple spotted the 'for sale' advertisement and came down for a look. They followed this up with several more visits and what they saw they liked, so decided to take the plunge.

"We liked the area with lovely friendly people, as well as the beach," explains Gary.

The couple admit there is a fair bit of work with a new venture such as this. "One thing I know for sure," says Gary, "Hard work pays off." He adds, "What you give - is what you get."

The couple are very keen to be part of the community. "We want to look after the



Gary and Nancy Arora the new owners of Four Square, 59 Tasman Street, Opunake.

people of Opunake."

The couple have no immediate plans for changes as they are aware that the supermarket is already in good heart, due to Bryce's effort's and his staff. "It's a good store - don't fix glass

if it's not broken," Gary says with a smile.

The couple do not expect to have masses of free time, but what leisure they have is devoted to family activities with their baby daughter.

The couple's final message is,

"We want people to know we are here to look after them. We want to be part of Opunake and we hope they accept us. We will do our best."

The Old Pole Factory 33 Turuturu Road
TILE SHOP HAWERA
Ph/Fax: 06 278 4842
Mobile 0274 520 809
Email: icb@xtra.co.nz

- * Supply & installation of tiles
- * Mosaic supplies
- * Cutting and drilling service
- * Custom made fire/ash hearths
- * Free quotes
- * Design & colour advice



Special for May June & July!
Have us supply & install your tiles and be in to win your tiles FREE! T & Cs apply

SEND US YOUR SPORTS STORIES AND PHOTOS!

OPUNAKE & COASTAL NEWS

Promote your business or event in our area, call us on:

Ph/Fax: 06 761 7016 - 23 Napier Street, Opunake
or e-mail us: ads@opunakecoastalnews.co.nz

We welcome your contributions
Please send to
editorial@opunakecoastalnews.co.nz

POWERWORX

Power Supply Rural & Residential

Design, upgrade and repair overhead and underground power supplies

- Powerco Approved
- Underbores - wires and pipes
- Powerline maintenance
- Fault repair
- Subdivision power installation
- Vegetation control around powerlines
- Network connections
- Transformer & line upgrades
- Specialists in rural power servicing and installation

0800 877 746

Taranaki Region
Contact Bruce Wilson Manager
58 Glover Road, Hawera Ph: 06 278 4514
Email: powerworx@obertech.co.nz

BRIAN HILL BD HILL BUILDING

- *New homes
- *Alterations
- *Rotary cowsheds
- *Herringbone dairy sheds
- *Concrete driveways
- *Bridges
- *Pre-cast silage pits
- *Hay barns & implement sheds
- *Concrete races
- *Repair work

We are a licensed building practitioner and Master Builders member. Experienced in the design and consent process.



0274 442 703



Opunake High School students get the low down on the TPP

We recently hosted Minister of Trade the Hon Todd McClay here in Taranaki to provide opportunity to talk about the Trans Pacific Partnership. Included was an invitation to the local high schools with approximately 150 year 12 and 13 students coming to hear the ins and outs of how the trade deal will work. It was great to have a contingent come through from Opunake High School to meet the Trade Minister and ask him some well thought through questions.

The Taranaki Chamber of Commerce also hosted a business luncheon for the business community. It was great to get the current business leaders and some future business leaders (students) all get the opportunity to clarify the importance of this trade deal for New Zealand and Taranaki.

The Trans Pacific Partnership is a trade agreement between 12 Pacific Rim countries (Japan, Vietnam, Brunei, Malaysia, Singapore, Australia, New Zealand, Canada, United States, Mexico, Peru and Chile).

For us, it will provide tariff savings of an estimated \$96 million a year for the dairy industry, which is good news for our local farmers. Looking at the meat industry alone, there will be tariff



Jonathan Young MP for New Plymouth

savings on an estimated \$84 million a year, and to put that in context there were New Zealand exports of \$2.8 billion in meat products to the TPP region in 2015.

New Zealand is an exporting nation and selling to our own people only will never make us wealthy. However, what will see our economy grow is selling to the 800 million people that are included in the TPP Region, including some of the world's largest economies, USA and Japan.

What the TPP creates is a level playing field for our exporters, so that we are competing with the same tariffs or the elimination of tariffs alongside other exporters within the TPP. With \$274 million tariffs saved per year, and an estimated \$2.7 billion a year added to GDP by 2030, this is a trade deal that is in the best interests of New Zealand, and for us locally.



Opunake Secondary Students with the Minister of Trade, Hon Todd McClay, Jonathan Young MP and Barbara Kuriger MP.

Todd McClay, the Minister of Trade debunked a number of myths that the opposition to TPP have been spreading. Students asked questions around the costs of medicine and the provision for investor state dispute processes. He clarified that these processes were an instrument of public international law that grants an investor the right to use dispute settlement proceedings against a foreign government if those governments break their agreements or arbitrarily nationalise such foreign owned assets to the detriment of investors. The investor

state dispute process has been included in all international trade agreements in the past as a standard part of the trade agreements. The first ISDS was included in a trade agreement between Germany and Pakistan in 1959.

All in all, it was an excellent visit to Taranaki that gave many people the opportunity to ask some solid and searching questions. The next Minister to visit Taranaki will be Hon Nathan Guy, the Minister of Primary Industries. He will be visiting Coastal Taranaki. More info to follow.

Kiwi dream becoming more elusive

There is no doubt that New Zealand is facing a housing crisis, and not just in Auckland either, there are issues throughout the country. I'm astounded at the number of families that are living in cars and garages, as well as the increasing number of people that are sleeping on the streets.

The Kiwi dream of owning your own home is becoming more elusive for New Zealand families. New Zealand has the world's second fastest growth in house prices. We are second only to Qatar.

Given that Qatar has the highest GDP per capita in the world, and that it also ranks in the top three countries for having the highest density of millionaires. Qatar is a very wealthy country, so it stands to reason that they have the fastest growing house prices in the world.

But why is New Zealand the second fastest? Why is the average house price in Auckland now \$940,000, a whopping nine times the average household income? Why is it that in Wellington, house values have increased



Adrian Rurawhe MP

by almost 9 per cent over the last year? Why is it that we have been credited with having the fastest growing gap between house prices and wages?

I'm pretty annoyed that the Government continues to deny that there's a crisis in the housing market, with Housing Minister Nick Smith calling it "media hype." The Prime Minister says it's a "challenge," but not a crisis. Recently the Prime Minister advised the homeless to go visit WINZ.

They're obviously not reading the paper or hearing the almost daily stories of Kiwis who are getting the sharp end of the housing crisis; people like the 60 year old woman

in Tauranga who is facing living in her car because the campground where she's been living for the last seven months is being closed down.

Meanwhile National is making noises - hinting at a possible land tax specifically for off-shore house buyers and talking up its special housing areas - but only because it's trying to look like it's doing something.

John Key has been steering the ship for eight years. His grab-bag of excuses has done its dash. As one cartoonist penned it this week - a finger in the dyke isn't going to cut it.

What's needed are bold policies to tackle the various causes of the housing crisis, policies like Phil Twyford's member's bill which will stop foreign speculators driving house prices out of the reach of Kiwi families. It's due for its first reading in Parliament next month.

The bill is based on Australian government policy which only allows foreign investors to buy residential property if they build new homes or apartments. This

has channelled \$30 billion into new builds in just the last 12 months.

Put that alongside Labour's plan to build thousands of affordable houses for first home buyers, a freeing up of restrictive land use rules that push up section prices, and we would be well on the way towards solving the housing crisis.

Nick Smith can shout until he's red in the face about houses being cheaper now than they were. They're not, and the increasing numbers of Kiwi families living in rentals or mortgaged up to their eyeballs, the young couples struggling to save a deposit, generation rent, or the parents who worry about their kids never being able to own their own home, know it too.

When middle New Zealand finds itself kissing goodbye to what is surely the definitive Kiwi dream, something is dreadfully wrong. The Government can't ignore it any longer.

Adrian Rurawhe, Member of Parliament for Te Tai Hauāuru

Chester Borrows

MP FOR WHANGANUI
HAVE AN ISSUE OR NEED TO SPEAK TO YOUR MP?

Please email or phone to book a time to speak with Chester.



Hawera Office
11 Victoria Street
Ph: 06 278 4059
chester.hawera@parliament.govt.nz

National
www.national.org.nz



JONATHAN YOUNG MP FOR NEW PLYMOUTH

Need to speak with your local MP?
Monthly clinics being held in Opunake. 3rd Mon each month. 10am - 12pm. Opunake Business Centre. Please email or phone to book a time.



NEW PLYMOUTH OFFICE

A: Corner Gill & Liardet Streets P: 06 759 1363
E: newplymouthmp@parliament.govt.nz
W: www.jonathanyoung.co.nz

Funded by the Parliamentary Service and authorised by Jonathan Young MP.
Corner of Liardet & Gill St, New Plymouth

National
www.national.org.nz



Adrian Rurawhe MP for Te Tai Hauāuru



Labour Taranaki Office
21 Northgate
Strandon
New Plymouth

Office hours:
10am - 2pm
Monday to Friday
3 - 7pm Thursday

labour.taranaki@parliament.govt.nz
06 757 5662 | 0800 ADRIAN

Authorised by Adrian Rurawhe,
Parliament Buildings,
Wellington



Labour

Andrew Little Labour Leader



Labour Taranaki Office
21 Northgate
Strandon
New Plymouth

Office hours:
10am - 2pm
Monday to Friday
3 - 7pm Thursday

labour.taranaki@parliament.govt.nz
06 757 5662

Authorised by Andrew Little,
Parliament Buildings,
Wellington



Labour

Planting the good seed

A generous donation from STOS will help the Plant Club at Opunake Primary School grow a successful garden plot.

Kathy Stanley, pictured far left with the school's young gardeners, donated \$555.55 for attending meetings of the Ngatitara Oaonui Sandy Bay Society which reclaims the foreshore of that coast. The

donation was given to the Opunake Lakeside Lions Club and it was handed to the Opunake Primary School. Pam Page, a school teacher, said that this money will be used to create a permanent wind shelter in front of the gardens. The idea of having a timed watering system for the school holidays is also being considered



Photo on right: Opunake Primary School's Plant Club

Test pilots wanted for Husqvarna Automowers

Husqvarna NZ is looking for people to test-drive Husqvarna Automowers and, in exchange for feedback, test pilots will actually be allowed to keep them, free of charge.

Priced from \$2,599 to \$5,999 the Husqvarna Automower is the world's best-selling robotic lawn mower and takes all the hassle out of lawn maintenance. With a battery-powered robotic lawn mower, the grass gets mowed automatically - around the clock, without supervision.

This June, following a two-month registration period, Husqvarna will select a panel of New Zealand garden owners to test drive a Husqvarna Automower. Selection will be based on a short survey completed during the registration period. Those selected will then have an authorised Husqvarna dealer install a Husqvarna Automower in their garden and, during the test period from June until December 2016, test pilots can kick back and enjoy having their lawns mowed by a robot!

In order to keep the Automower once the test period ends, test pilots just



The Husqvarna Automower in action.

need to submit 10 video reviews during the test period. Husqvarna developed the first Automower in 1995 and, during 20 years of development, has refined its mower concept to achieve the highest level of reliability, quality and cutting results.

The Husqvarna Automower uses razor blades to cut each blade of grass, resulting in a lush, green lawn that conventional blades simply cannot achieve. It can work in the dark, doesn't mind the rain and won't leave ugly track marks on your lawn.

With its spot-cutting function, the Automower senses if the grass is higher in a given area and mows until the height is the same as the rest of the lawn. It easily tackles steep slopes, can navigate tricky passages, is low noise and, because it is electrically powered, produces no harmful emissions. Other high-tech features include a pin-code lock, anti-theft alarm, automatic charging and an app that gives you full control of your mower from your smartphone.

Registration is open now and will close on 31st May. Register at www.automowertestpilots.co.nz

TARANAKI OWNED & OPERATED
Two shops covering Taranaki!
All curtains made on site in our New Plymouth Shop

Winter's around the corner
Keep the heat in!

Weekly round the Mountain Service!
Support your local Taranaki business



Ask about our drape & blind specials.



HOMEMAKER
Curtains - Blinds - Soft Furnishings
Free measure & quote Taranaki wide!
Round the Mountain Service

NEW PLYMOUTH
PH 06 757 5532
300 Devon St East,
Northgate Court, NP
HAWERA
PH 06 278 8488
170 High Street, Hawera
(Countdown Carpark)

Promote your events in the

OPUNAKE & COASTAL NEWS

· SUBDIVISIONS · DAIRY EFFLUENT SYSTEM DESIGN
· FARM MAPS · BRIDGE & CULVERT INSPECTIONS



Call Ian Steele to discuss your requirements

btw company
surveyors . planners . engineers . land & g-i-s services

Cnr Courtenay and Eliot Street, New Plymouth
Phone: 06 759 5040 or 027 688 1441
ian.steele@btw.nz | www.btw.nz

LAWYERS

OPUNAKE LAWYERS Thomson O'Neil & Co.

Our Opunake Office is attended by:

Robert England on Wednesday & Fridays for buying and selling houses, farms & businesses; trusts, wills and estates.

Neal Harding on Thursday, for residential sales and purchases, family, district & criminal court matters, civil & business matters.

Stephaine Coulter on Tuesdays for employment matters, house purchasing and selling, refinancing and wills.

FOR ALL YOUR LEGAL REQUIREMENTS

30 TASMAN ST, OPUNAKE

PH: 761 8823

Academic acceptance for Parihaka historian

In his 70-year career as a journalist and historian, Dick Scott has researched some of New Zealand's most important stories. Now the 92-year-old has received academic recognition with an honorary doctorate from Massey University.

His only previous only academic qualification had been a Diploma of Agriculture from Massey College. Yet his exceptional scholarship helped redefine New Zealand history by telling the story of Māori resistance.

These days Dr Scott's memory is not what it was, but his dry wit remains. His wife Sue Scott, who typed up his hand-written manuscript

for his 2004 autobiography, is happy to fill in the gaps.

"When [Massey Vice-Chancellor] Steve Maharey rang to give us the good news, Dick made a joke in typical Dick fashion: 'Well, they nearly left it too late', she laughs.

Dr Scott says the honorary doctorate is "quite nice for my sense of pride." Mrs Scott says she was also extremely proud when they got the call.

"The reason it makes me particularly proud, I have to say, is that in earlier years Dick got a lot of flak from some academic historians," she says. "I think it's very satisfying that the work's been acknowledged for

what it always was – quality research and historical documentation."

Dr Scott is best known for uncovering the long-forgotten story of passive resistance at Parihaka. His books *Parihaka Story* and its more influential follow-up *Ask that Mountain* told how 1600 police and volunteers destroyed the settlement of Parihaka in Taranaki, which had become a symbol of protest against the confiscation of Māori land.

Pro Vice-Chancellor of the College of Humanities and Social Sciences Distinguished Professor Paul Spoonley describes *Ask that Mountain* as "one of New Zealand's most influential



Dr Dick Scott and his wife Sue.



Associate Professor Kerry Taylor, head of the School of Humanities; Vice-Chancellor Steve Maharey; Dr Dick Scott; Chancellor Chris Kelly; and Jock Phillips, historian and editor of Te Ara The Encyclopedia of New Zealand.

books".

"It was significant for many reasons," he says. "Here was a Pākehā historian writing about Māori, drawing on Māori oral sources. It provided an accessible and compelling account of what happened at Parihaka, which became a key element in school study, university research and public consciousness.

"It was, and remains, one of the most influential books of the 20th century.

This was a Massey graduate who went on to produce something extraordinary and influential."

Dr Scott says *Ask that Mountain* is the historical work he is most proud of.

"Parihaka was my best piece of work because it got to the truth of things for Māori, a truth that had been buried," he says. "I don't have any Māori blood but I did want to correct the record. I was able to tear off a few blankets of the cover up."

Dr Scott's capping is particularly timely as the Parihaka community recently agreed a deed of settlement and a \$70m compensation package with the Crown. The formal process of settlement is due

to be concluded this year.

Dr Scott's wife believes his work was instrumental in gaining widespread acceptance of the injustices at Parihaka – and its impact goes beyond the small community in western Taranaki.

"They were resisting peacefully and the whole set-up they had there – the buildings, the whole way of life – it's extraordinary to think that could be just smashed. It's really heart-breaking," she says.

"Parihaka was the classic example of the worst colonial behaviour and I actually wonder if Dick's work has shaped many of the Treaty of Waitangi settlements that have come since."

Sandford Bros Ltd & Spreading Sandford Ltd

Phone Auroa - 06 274 5852
2118 Skeet Road, Hawera
Toll Free 0508 726 336



Sandford Livestock Ltd
Phone Hawera – 06 278 0045
189 Fairfield Road, Hawera
Phone Waitara – 06 754 8069
101 Mould Street, Waitara
Toll Free 0800 707 404

We deliver for **ALL** suppliers of PKE



No **GIMMICKS**
JUST GREAT PRICING

**DELIVERING PKE
TO THE COAST
FOR OVER
TEN YEARS**

CALL US NOW FOR
COMPETITIVE
PRICING

Rural & General Cartage
Specialising in:
* Palm Kernel
* Aggregate
* Fertiliser
* Bale Cartage

Livestock Cartage
Depots in:
* Okato
* Hawera
* Auroa
* Waitara

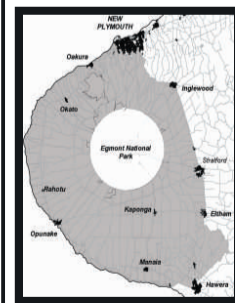
Ready Mix Concrete
Depots in:
* Hawera
* Wiremu

Ground Spreading
* Spreadmark Certified
* 4WD Trucks
* GPS Proof of Placement



WANT TO DO BUSINESS IN OUR AREA?

Talk to us
today!



Opunake and Coastal News is distributed free to every home & business within the rural area, bounded in the north by the New Plymouth city border, extending east to Egmont Village and around to the edge of Stratford, south to Hawera city border and inland to Kaponga & Eltham. We want to be involved with your business. Call today and discuss your marketing options with us.



**OPUNAKE & COASTAL
NEWS**

Promote your business or event
in our area, call us on:

Ph/Fax: 06 761 7016 - 23 Napier Street, Opunake
or e-mail us: ads@opunakecoastalnews.co.nz

We welcome your contributions
Please send to
editorial@opunakecoastalnews.co.nz

Government still allowing lead shot loophole for duck shooters

May will herald another season of death for hundreds of thousands of ducks, swans and geese—including native wildfowl—as the duck shooting season opens. Not only will around a million birds be killed by shooters, but tens of thousands will be left maimed and crippled. An untold number will succumb to lead poisoning, due to the government's continued inaction on a loophole in the law.

"The massacre that is duck shooting has been going on for many years despite plenty of evidence of the suffering it causes," says SAFE Executive director Hans Kriek. "The nature of shotgun shooting means that

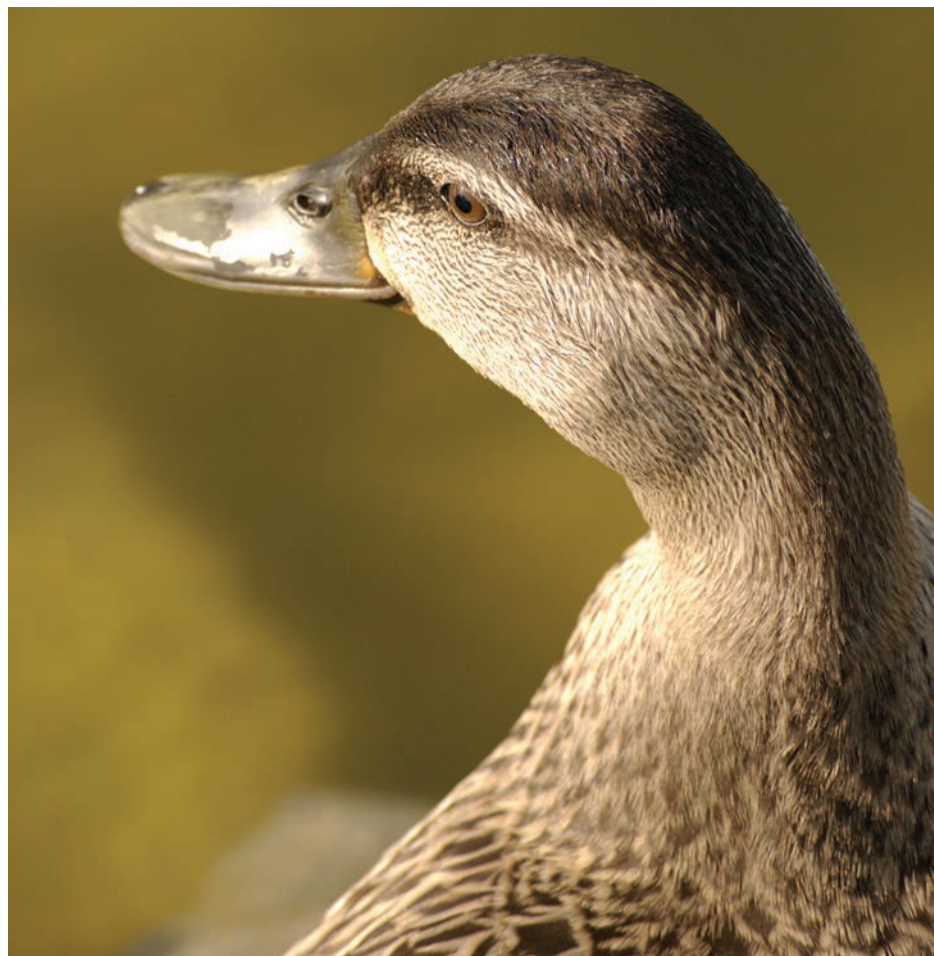
many birds are not killed outright, but are wounded and left to die a lingering death."

To make matters worse, many birds, including protected native waterfowl, are slowly poisoned to death after ingesting lead shot they mistake for grit. To stop this cruel poisoning, the Government banned the use of lead shot in 2005 but in an exemption, foolishly allowed lead shot to be used in lighter shotguns.

The Department of Conservation acknowledges that lead shot entering the environment and food chains causes contamination, but says that the historical exemption is considered

justified to ensure that younger hunters can enter the sport of waterfowl hunting through the use of lighter guns, for which only lead shot is available at an affordable price.

"This exemption is being used by many hunters who have switched to lighter guns so they can avoid the lead shot ban," says Mr Kriek. "The time has come for the Government to close this loophole once and for all so that hunters can no longer poison our environment. Given the carnage already caused by duck shooting, banning all lead shot is the least the Government can do to lessen the damage to our wildlife and environment."



Duck shooting season has begun.

MAYOR'S COLUMN The Annual Plan and green spaces

Hi everyone. Thank you to all those who took the time to make a submission to the Draft Annual Plan 2016/17.

We ended up with more than 1,100 submissions from the public – both on the formal submission form and through the myrates.npdc.nz website.

That's a great level of feedback and I thank everyone who took the time to send in their opinions. Your comments will help us finalise a 12-month plan of activities and funding that will best suit our community.

The Council will be holding two days of hearings on the Annual Plan submissions, on 9 and 10 June, then meeting on 28 June to make the final decisions.

Anyone is welcome



Mayor Andrew Judd

to come to the Council Chamber to sit in on the hearings or the deliberations, or you can watch them live online via newplymouthnz.com.

Green Management Plan

Work is about to begin

on creating a management plan for the majority of public green spaces in New Plymouth District, and we'll be asking residents what should be included in the plan.

About 300ha of land owned by the Council will be included in the plan, with these areas ranging from reserves alongside walkways and streams to bush remnants and open spaces.

Currently there are management plans in place for significant parks and reserves, such as Pukekura Park and coastal reserves, as well as sports grounds, cemeteries and historic

reserves. The Green Spaces Management Plan will cover most of the rest of the green spaces in the district, with the exception of grazing areas, pine forests, halls and land that has been identified for disposal.

Taken as a whole, these green spaces contribute significantly to the quality of our lifestyle so it's important that we manage them well.

Please keep an eye out for more information from June about how you can be involved in the creation of this new management plan.

Mayor Andrew Judd
New Plymouth District



- Generators Pto + Diesel Sets
- All Cowshed Wiring
- Farm Control Systems
- Domestic Wiring
- Electrical Inspections

No job too big or too small
Wiring the Coast - 20 years experience
Ph: Craig on 027 207 7775

We welcome your contributions
Please send to
editorial@opunakecoastalnews.co.nz
Next Issue due out June 3

CASHFLOWS ARE TIGHT

Have you looked at your farm insurance lately?

for a **FREE QUOTE** call



Gary @ Dunlop Insurance
027 4517 404 - 06 278 6856

25% to 50% off all



La-z-boy Recliners - La-z-boy Lifters - La-z-boy Suites
Sale goes from 16 May to 7 June



Also See our new **URBAN RANGE** and solid furniture

Visit our La-z-boy Gallery at New Plymouth & Stratford

FREEPHONE
0800 753 2427
Free delivery Taranaki Wide!
www.rjeagar.co.nz



New Plymouth Fitzroy	Weekdays	8.30am - 5.00pm
	Saturday	9.30am - 4.00pm
	Sunday	10am - 4.00pm
Stratford Broadway South	Weekdays	8.30am - 5.00pm
	Saturday	10am - 2pm



Winter is just around the corner!
It's time to **Heat up** your home!

www.gotitcoveredsouthtaranaki.co.nz



Canvas work, PVC, Saddlery,
Vehicle Interior restoration, Motorbike seats, Trailer covers, Sunshades, Tonneau covers, Swimming pools and Sandpit covers.

Got it Covered South Taranaki

P. 06 278 8255 - M. 027 508 8958

11 Fitzgerald Lane, RD 13, Hawera

www.gotitcoveredsouthtaranaki.co.nz

Winter Health

The importance of getting a jab

Every year, New Zealanders take an average of around four sick days off work, costing the economy \$1.4 billion

The dreaded flu is one of the main culprits, affecting one in every five Kiwis

It's hard to avoid coming into contact with the flu. It's important to get protected.

By getting a flu shot, we are doing what we can to protect ourselves, our families and communities against the virus and avoid time away from work, school, sport and other activities.

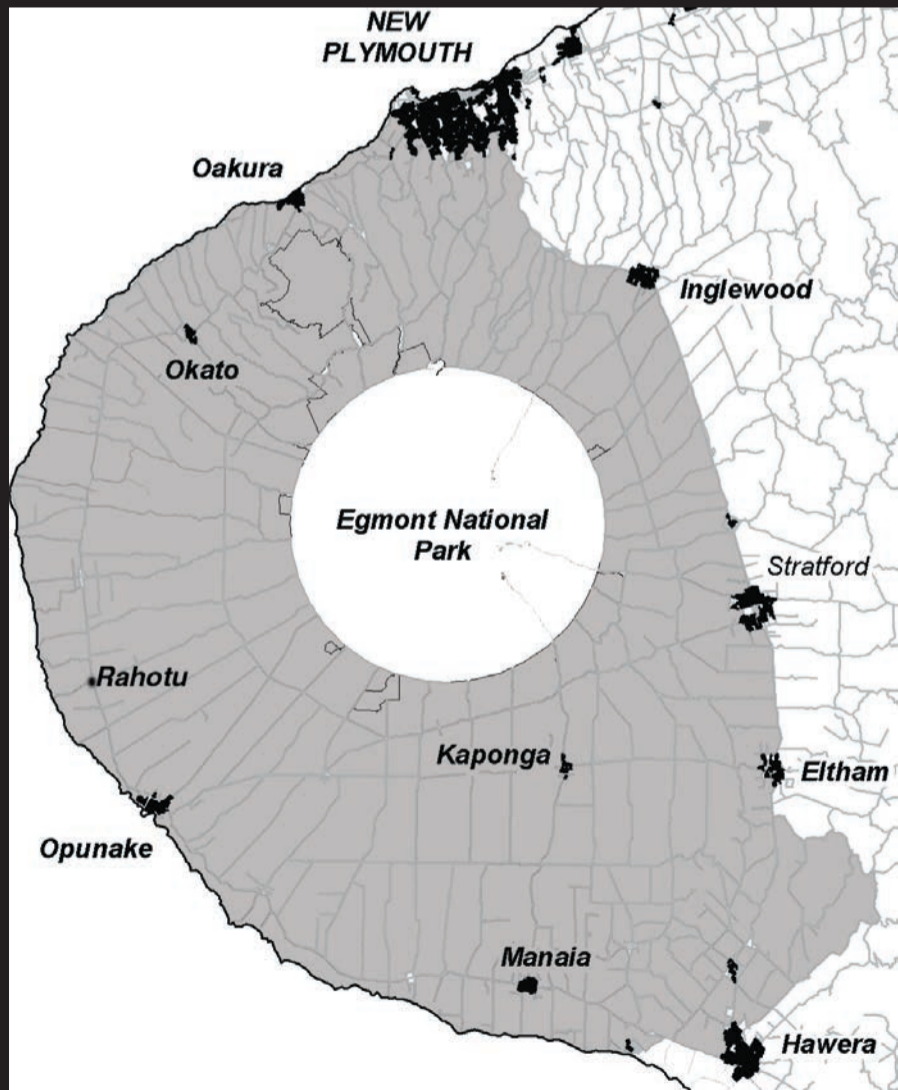
Getting vaccinated as early as possible gives the best defence against the flu and immunisation can last you an entire year, according to the Ministry of Health.

It doesn't matter how young, fit or healthy you are, you can still get the flu. Getting vaccinated is not just for your protection, but to ensure you don't pass the virus on to

Vaccination is needed on a yearly basis as not only does the protection level reduce over time, but the circulating influenza strains change and may not have been included in your last dose.

The vaccine works by helping your body to make antibodies that recognise the flu virus and prevent infection. It takes a few weeks for the body to produce these antibodies and will become your best defence against the flu. It takes less than 10 minutes and can save you weeks spent in bed feeling ill,

WANT TO DO BUSINESS IN OUR AREA? TALK TO US



Opunake and Coastal News is distributed free to every home and business within the rural area, bounded in the north by the New Plymouth city border, extending east to Egmont Village, and around to the edge of Stratford, south to the Hawera city border and inland to Kaponga and through Eltham.

We are an independent newspaper based in Opunake, which is targeting both the towns and rural communities and we aim to have news coverage within all the areas of our distribution.

We want to be involved with your business call today and discuss your marketing options with the team.

COVERING THE COAST

Promote your business or event in our area call us on (06) 761-7016

OPUNAKE & COASTAL NEWS

• 23 Napier St, Opunake • Ph/Fax 761-7016
• email: ads@opunakecoastalnews.co.nz

TARANAKI OWNED & OPERATED

Two shops covering Taranaki!

All curtains made on site in our New Plymouth Shop

Winter's around the corner Keep the heat in!

Ask about our drape & blind specials.

Weekly round the Mountain Service!

Support your local Taranaki business



HOMEMAKER

Curtains - Blinds - Soft Furnishings
Free measure & quote Taranaki wide!
Round the Mountain Service

NEW PLYMOUTH
PH 06 757 5532
300 Devon St East,
Northgate Court, NP
HAWERA
PH 06 278 8488
170 High Street, Hawera
(Countdown Carpark)

RYLOCK

Enhancing the way you live with Double Glazing



See the Benefits visit www.dualglaze.co.nz
For Free Measure & Quote Call 7588073

59/4983AA



Winter is just around the corner!
It's time to **Heat up** your home!

Choosing the right heating

EECA ENERGYWISE says you need to carefully consider how you use a room before deciding on the type of heating. Technical expert Christian Hoerning says spending a bit more upfront on a modern woodburner, ENERGY STAR heat pump or ENERGY STAR flued gas heater work best for larger rooms you want to heat regularly – for example living areas. For other rooms that are used infrequently a portable electric heater may work well. These heaters are cheap to buy but more expensive to run than fixed heaters.

Heat pumps have low running costs, when used properly, and produce instant heat. They are also convenient, in that you can control the temperature with the thermostat and use the timer.

Be aware that heat pumps must be sized correctly for the space and the climate to work well. It's important to get a reputable installer to size the area you want to heat (if you live in a colder area, ask the supplier to size the heat pump based on its low temperature performance) Some are a lot more efficient than others - look for ENERGY STAR® qualified models for superior energy efficiency and performance in low temperatures.

They won't work during a power cut. If you live in

a corrosive environment, e.g. near the coast or in a geothermal area, check with the supplier for applicable warranties.

Modern woodburners are good for low running costs, especially if you have access to free or cheap firewood.

They are good for the environment as they produce very little pollution, and use renewable wood energy

They are also good for heating large spaces, and heating hot water in winter through a wetback system.

Things to look out for include, firewood must be dry to burn cleanly and efficiently, so you need to plan ahead and store it undercover, ideally for at least 12 months.

You also need a building consent to install one and - unless your property is larger than two hectares You need to choose a woodburner on the Ministry for the Environment's list of approved woodburners.

Wood pellet burners are good for the environment as pellets are made from waste products and burn cleanly. They are also good for heating large spaces, and for heating hot water in winter through a wetback system. They also have heat control, making them better than a wood burner.

Against that, they won't work if your electricity isn't working (they use a small amount of electricity).

You need a building consent to install one.

Only authorised burners can be used in areas with poor air quality.

You can't burn firewood, only pellets. Pellet prices vary across the country, so check prices in your area before getting a wood pellet burner.

Flued gas (natural or LPG) heaters or fireplaces are good for heating larger areas for longer periods, and for convenience. You can control the temperature with the thermostat and use the timer.

Be aware that if you don't already, you will probably have to pay a fixed charge for reticulated gas supply, and you must have your gas heater installed by a registered gas fitter. Some gas space heaters are a lot more efficient than others - look for ENERGY STAR®.

Electric heaters are very cheap to buy and good for heating a small room infrequently, and for short periods only.

Be aware that they are more expensive to run than most other heating options. There are different types (radiant, convection, fan) that deliver heat in various ways. The different types all have the same efficiency (the same amount of heat output per unit of electricity used). Many have built-in thermostats, but generally they aren't very accurate.



We now have a dusting of snow!

Central heating is good for providing heating for your entire house, and for convenience. You can control the temperature with the thermostat and use the timer. Many are zone-controlled so you can control the temperature in different parts of the home.

Be aware that It can be expensive to install, and that heat can be supplied by a range of heating systems e.g. gas, wood pellet, hot

water heat pump. It's worth choosing a system that has an individual thermostat for each room. It can be very expensive to run if your house isn't well insulated or is draughty. Some are a lot more efficient than others - look for ENERGY STAR®.

Unflued gas (natural or LPG) can be good as back-up heating during power cuts, if your normal heating relies on electricity to operate.

Against that, unflued

LPG heaters are the most expensive form of heating.

There are also health risks. It will pollute air with toxic gases and large amounts of water vapour, so you must keep at least one window open when it's in use and never use in bedrooms. They can also make your home damp and mouldy. Portable LPG heaters can be a fire risk, as anything too close can quickly catch alight.

WINTER IS ALMOST HERE!

GET YOUR WINTER WARMERS



SINCLAIR Beta ELECTRICAL

AVAILABLE NOW AT
SINCLAIR ELECTRICAL & REFRIGERATION
31 Tasman Street, Opunake
Phone: 06 761 8084

Electrolux Panasonic dyson PARMCO Haier MITSUBISHI ELECTRIC Fisher&Paykel BOSCH LG

Carpets Wholesale & Retail 2006 Ltd



KEEP THE HEAT IN AND THE COLD OUT!

Insulate your home with new carpet and underlay
Great prices from Carpets Wholesale and Retail

Carpets Wholesale & Retail 2006 Ltd
Northgate Court, Courtenay St, New Plymouth
Ph: 06 758 9187 Email: cwrld@xtra.co.nz

In the Countdown carpark
HAWERA
Ph: 06 278 7126

Rinnai Rinnai Energysaver Gas Heater Cashback
1st May - 30th June 2016

Save \$150

Asthma affects 1 in 4 children

Only one energy efficient gas heater is Asthma Foundation's Sensitive Choice[®] approved for maintaining optimal air quality, while heating efficiently.

Houghton's Plumbing, Heating & Gas Ltd
164 PRINCES STREET, HAWERA 06 278 8883 • www.houghtonsplumbing.co.nz
✓ Plumbing ✓ Gasfitting ✓ Drainlaying ✓ Bathrooms ✓ Heating ✓ Parts & Service

Winter is just around the corner!
It's time to **Heat up** your home!



Safety tips for heaters in winter

As the temperatures drop, you are probably starting to think about ways to stay warm over winter. Now is a good time to check your gas heaters to make sure you can stay safe as well as warm. LPG catches fire very easily and may explode if the tank or cylinder gets punctured, so store it carefully and check it before using it. Check the bottles and rubber parts for cracking, and check for leaks. Either apply soapy water to the connections, turn the cylinder on and look for bubbles, or sniff the cylinder for a smell of rotting vegetables. Get professional help if you suspect a leak. You cannot store more than a total of 100 kilograms of LPG unless you have special permission anything that may catch fire. If your heater is in a high traffic area, or you have young children, install a safety guard. Don't use patio heaters and barbecues inside. Keep LPG heaters for large rooms, and don't use them in bathrooms. Turn off bottles at the valve when you are not using them.

Ventilate the room - breathing LPG can make you very sick, and LPG heaters can make a lot of condensation. Stand away from the flame when operating the controls. Keep your heater at least a metre away from

Taranaki's Main St. OAKURA NP

Open Every day of the year from 6am till 10pm
You can rely on us!

Hawera Opunake Rahoitu Pungarehu

LPG BOTTLES ANY SIZE CITY PRICES!

More than just a Service Station
OPEN 7 DAYS - 6am - 10pm
All Major Fuel Cards Accepted

HEYDON PRIEST LTD OAKURA

Route 45, Taranaki's Main Street
Oakura Ph: 06 752 7753
(under cover parking)

USE YOUR **Mobil CARD HERE!**

Selections at Sinclair Betta Electrical



Call into Sinclair Electrical. The girls will help you find something to keep you nice and warm.

We welcome your contributions
Please send to
editorial@opunakecoastal news.co.nz

FREE CURTAIN MAKING ON THOUSANDS OF FABRICS*

NO PAYMENTS & NO INTEREST FOR 12 MONTHS* ON CUSTOM-MADE CURTAINS OVER \$500

For a limited time, Guthrie Bowron is cutting the cost of curtains!

Get free curtain making on THOUSANDS of great quality fabrics*. Plus, you could enjoy no payments and no interest for 12 months on custom-made curtains over \$500*.

You'll need to confirm your curtain order by 13th June to get these amazing deals, so come in and chat to our experienced team to find out more!

Only available at Guthrie Bowron, New Zealand's decorating specialists.

GB Guthrie Bowron
Decorating Specialists
TRUSTED SINCE 1896

*Only fabrics from selected ranges and over \$34.99 per metre are included in this offer. Minimum drop of 160cm applies. Orders must be confirmed by 13 June 2016 to be eligible for this offer.
*No Payments and no interest for 12 months ("Payment Holiday") is available on Q Card Flexi Payment Plans for in-store purchases only. Offer excludes Gisborne store and is available for custom made curtains only. Minimum spend \$500. Annual Account Fee of \$50 applies. New Q Cardholder fees - \$55 Establishment and \$3 PPSR. Existing Q Cardholder fee - \$35 Advance. Q Card Standard Interest Rate, currently 25.25% pa, applies to any outstanding balance at end of Payment Holiday. Offer expires 13 June 2016. Q Card lending criteria, fees, terms and conditions apply. Rate and fees correct as at date of publication, subject to change.

Keep warm with style at Guthrie Bowron

Curtains set the mood for your room. We help you choose from all of the quality options for your unique look and feel. With us, your choices are virtually endless... we have a magnificent range, from affordable quality fabrics, to exclusive international designs. Whether you are renovating, re-invigorating or building, our experts can guide you through style, lining and functional options that work best for you. But that's not our only point of difference... we also offer free curtain making on our 'Everyday Free Make' range of popular fabrics. So that's a truly quick and convenient approach to custom-made curtains at an unbelievable price. We are a convenient one-stop location for all your home decorating needs. We can help you find solutions for your decorating project. Flooring Choosing flooring at Guthrie Bowron is a real pleasure. It's not just our huge, quality range... it's our expertise that makes the difference.

We have fabulous solution-dyed nylon and wool carpets, gorgeous wood and laminate flooring as well as a stunning range of vinyl. But what's as important is that we work with you to work out and recommend your ideal solution. We've even gone as far as to identify our most popular, value-added ranges to help you narrow your choices down. And whether you choose to pop into store or have us come to you - what you can rely on is expert advice to make your very best decision. Book a free measure and quote and let us do the hard work for you. We come with samples and our expert advice for every colour, style and flooring type.

Use your outdoor living areas all year round

Outdoor shelter for just **\$1 DOWN**
Plus 15 months interest free

Offer ends 30 June 2016 | Normal lending criteria apply | Conditions apply

- Warm & dry in winter
- 99% UV protection in summer
- Stylish & permanent
- 5 year warranty

ARCHGOLA TARANAKI
OUTBACK
Outdoor displays at 67 Colson Rd
Phone 0800 363 433 | www.archgola.co.nz

Winter is just around the corner!

It's time to **Heat up** your home!



You can't police product quality – but you can police installation



The card that tradespeople must carry

Current discussion around the use of non-standard poor quality plumbing products highlights the need for consumers to ensure that those performing plumbing work are properly authorised. Construction sector regulator, the Plumbers, Gasfitters and Drainlayers Board, are warning the public to check the credentials of tradespeople before engaging their services. It is important to know that work undertaken by unlicensed people, not only risks health and safety but may also invalidate insurance policies. The Board's Chief Executive, Martin Sawyers said; "One of the ways the public can ensure that the plumbing products being installed meet the New Zealand Standards is to check that the plumber is licensed. Licensed plumbers have an obligation to only install products that meet the standards required by the Building Code."

"Their training ensures that they are able to identify what products meet that standard, and they know that if they install products that don't meet that standard then they are legally liable and may also face disciplinary action from the Board. "Unfortunately there are a number of people offering plumbing services who are untrained and unlicensed. Those people will not have any scruples in installing products that are not of the required standard," said Martin. To stay safe and avoid any risk it takes one simple action. Ask the tradesperson for their authorisation card issued by the PGDB – they are required to produce it. Backing the Board's efforts to extinguish unlawful activity within local communities is a free for download mobile app R.A.C (report-a-cowboy). An 'industry first,' it is designed to quickly deal with illegal work within

the construction sector, and consumers who wish to make a complaint about defective work or products should use it. The app allows consumers to submit photo or video evidence, such as illegal work sites and false advertising on vans. It also has the ability to log GPS coordinates for quick deployment of the industry's policing and investigations team. Download the R.A.C app through the App Store and Google Play, or go to the Board's website www.pgdb.co.nz/app. The PGDB's public awareness campaign efforts are endorsed by the New Zealand Insurance Council who warns,

The use of unregistered and unqualified persons to do sanitary plumbing, gasfitting or drainage work on an insured property may invalidate the property's insurance cover in the event of a loss resulting from the work undertaken. Always ask to sight a tradesman's authorisation card before work is undertaken – they are required to produce it." Sanitary plumbing, gasfitting and drainlaying are regulated industries in New Zealand, and it is illegal to do this restricted work unless authorised by the PGDB. The PGDB is the statutory body which regulates the trades to ensure those providing the services are competent and safe.



Retro fit your existing aluminium windows with factory made double glazed units by the professionals.

Call now for your FREE QUOTE



WAYNE JONES
(06) 278 8991
e: jones.fairview@xtra.co.nz
w: www.fairviewhawera.co.nz
159 Princes Street, Hawera





FAIRVIEW
WINDOWS & DOORS HAWERA

GIBSON PLUMBERS LIMITED

PHONE DAVE
761 8159 office 027 445 7164 or 761 8757 home
265 IHAIA RD, RD 31, OPUNAKE

RYLOCK

Enhancing the way you live with Double Glazing

See the Benefits visit www.dualglaze.co.nz
For Free Measure & Quote Call 7588073


GET PREPARED FOR

Winter


Immune Boosters

- Good Health Viralex
- Go Healthy Vir-Defence
- Nutura Life Ester-C
- Thompsons Chewable Vit C

always at a special price



Available at..



OPUNAKE COASTAL PHARMACY
Your coastal community pharmacy
55 TASMAN STREET, OPUNAKE - PHONE: 06 761 8599
(NEXT TO THE FOUR SQUARE)

CATALOGUE SALE



FREE UNDERLAY
ON SELECTED CAVALIER BREMWORTH CARPETS*

+ CARPET FROM \$35 PER SQM*

+ NEW RANGES

+ LVT FROM \$39 PER SQM*

+ VINYL FROM \$39 PER SQM



FLOORING XTRA

CLASSIC CARPETS
Borrell Ave, Westown, N.P.
Ph: 06 753 3933

* Terms and Conditions apply. Promotional pricing expires 31 July 2016, or until stocks are sold and can't be used in conjunction with any other offers. Only available at participating stores.

Excerpt from 'Hell-Bent For Life (2009) by Dr John Valentine.

New Zealand medical doctor Dr John Valentine had been posted in March 1953 to Tinian Island, one of the Mariana Islands. The island is just north of Guam. His duties included general medical work with emphasis on patients suffering from leprosy.

The roads on Tinian were almost overgrown with wild sugar cane but wherever we went we saw farms the Japanese had developed before the war. Often in the ruins of an old Japanese house were the remains of the tiled baths and the sliding wood and paper partitions so characteristic of Japanese homes.

On the high part of the island there was a 300 bed American hospital which had been prepared for the casualties expected in the final assault on the Japanese mainland. After the dropping of the atom bombs on Hiroshima and Nagasaki this hospital was not needed, so was never used.

At the northern end of the island were the atom bomb houses where the bombs were stored and assembled. They were loaded onto B-29s for the flight to the mainland of Japan. At that time Tinian

was the largest and busiest airfield in the world. The runways were still intact and one could drive for miles along deserted concrete strips which were all the more lonely because they once pulsed with activity. In some tall concrete towers which had been colonised by bees, there was so much honey that it was breaking through the wall linings and flowing to the ground. The bees did not object to an intrusion but if we heard the buzz of the large yellow native wasps we got out of there in record time. Father Marcian advised us to run straight for thirty metres and then change direction. His theory was that the angry wasps were conditioned to stay on a straight course and when we turned they lost us.

The road from the bomb houses to the loading pit, where the bombs were lifted into the belly of B-29s, were rough and overgrown. I felt the contrast to the energetic military security which must have enveloped the area before those bombs shook Hiroshima, Nagasaki and indeed, the whole world.

Scrap dealers had taken the heavy trailers which had been used to carry the bombs to the loading pits: I had seen

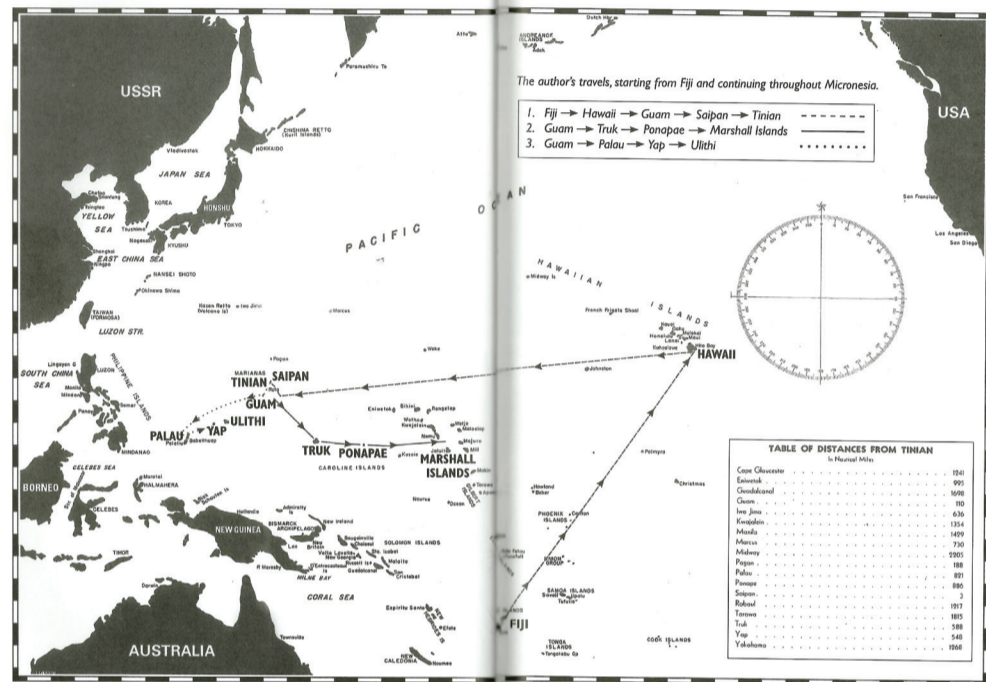
these rusty iron vehicles lying at the wharf ready to be broken down and shipped away. They had been made so that the bombs fitted between strong uprights and were in no danger of rolling off. The actual loading pits had been filled with earth, and now bushes sprouted from the top. The bomb houses had been insulated and had air conditioning, which was unusual at the time. The heavy pulleys used to move the bombs were still in place, below the steel girders along which the bombs were pushed, before being placed in cradles for transport to the planes. Heavy mounds of earth had been built up to roof level on all but the seaward side of the building. Barbed wire fences still surrounded the area, but the gates were falling off their hinges.

A notice at the main gate read 'Restricted - keep out'. I took the 'No Smoking' notice from the bomb house as a souvenir. This seemed ironic as the bombs turned two large cities into smoking ruins. (pages 142-143).

We are grateful to Jayeta Valentine for permission to publish this excerpt from the autobiography of Dr Valentine, her father.



Dr Valentine with one of his young patients.



Map showing Tinian and other islands of the Pacific Ocean.

Time running out for feedback on Annual Plan

With consultation closing at 5pm on Friday May 20, time is fast running out to give feedback on three proposals in the South Taranaki District Council's draft Annual Plan for 2016/17.

Group Manager of corporate services, Phillipa Wilson, says a key feature in the proposed Plan is the reduction in the District Rate increase from 2.91 per cent to 0.98 per cent.

"Every three years the

Council must develop a Long Term Plan which outlines the intended projects and services for the district over the next ten years. The Council adopted its most recent Long Term Plan in 2015," says Mrs Wilson.

"Each year, an Annual Plan is also developed highlighting the programme for the upcoming year, striking the rates and identifying any differences from the Long Term Plan," she says.

"Because there are no significant changes between the

proposed 2016/17 Annual Plan and the corresponding year of the Long Term Plan, the Council is not required to consult. However, our Council has decided it would still like community feedback on three proposals."

These are, to reduce the District Rate increase from 2.91 per cent to 0.98 per cent, to increase Building Services user fees by 18 per cent, and to increase Cemetery Services user fees by 10 per cent.

Secularists face Treaty claim over proposed ban of karakia

Proposed court action by a group of secular parents, backed by the Secular Education Network, over religious instruction in the classroom could result in a Treaty Claim says Ngapuhi kaumatua David Rankin.

Mr Rankin says that the plan to ban religious instruction and prayers in school will impact on karakia, and will violate Article Two of the Treaty of Waitangi, which guarantees

that the state will protect Maori in their taonga, which includes language and culture.

"The proposed ban on prayers will rule out karakia, and this will not only breach our Treaty rights, but also threaten our reo (language) and culture," says Mr Rankin. "We will take this fight to the Waitangi Tribunal and to the courts if necessary."

Mr Rankin says that the

Secular Education Network is carrying out a campaign of neo-colonisation. "This is a clear case of a group trying to destroy our culture - it's the nightmare of the nineteenth century happening again in the twenty-first century. The difference is that this time, we're ready for them, and we know how to fight back."

Mr Rankin has received offers of support from hapu, iwi, education, church and other groups who share his fears over the proposed ban.

David Rankin
027 602 7493

OPUNAKE & COASTAL
NEWS



Our next issue is due
out
JUNE 3
Contact us today to
advertise - 761 7016

Agricultural advice by the book

When it comes to legal issues in the farming industry, you'll find the team at RMY Legal speak your language.



T: +64 6 769 8080 | F: +64 6 757 9852 | 0800 733 837
136-138 Powderham St | New Plymouth 4310 | New Zealand

www.rmy.co.nz



FGNZ-Rescue 1: North Canterbury Fish & Game staff rescue fish trapped in pools on the rapidly drying Ashley River near Rangiora. Photo: Richard Cosgrove, Fish & Game.

Stranded fish rescued after the Ashley River dries up

North Canterbury Fish & Game staff have rescued more than 40 fish in a fish salvage operation in the Ashley River.

Concerned members of the public had alerted Fish & Game to some isolated pools of fish in the river which has rapidly dried up recently.

Fish & Game Field Officer Tony Hawker says it is quite unusual for them to be doing this type of operation in May (Monday May 9).

Normally staff keep a watch on the river in the height of summer around Christmas and launch

salvage operations when the flow drops.

"But with no rain recently and irrigators still able to take water, the Ashley has un-seasonally dried up," he says. The river which currently has a river stage height of just five centimetres at the Cones Road Bridge near Rangiora had a flow of around 60 centimetres a year ago.

"No doubt it's been a dry year and while groundwater consent holders close to the river will have restrictions when the river's low, those consent holders that are a

bit further away have no restriction."

Staff used an electric fishing machine which stuns the fish and draws them out from under the debris so that staff can net them.

The fish are only stunned while the electric current is running and recover in seconds once they're away from it.

The fish are then placed in a holding tank and released in the same river system into an area with more permanent flowing water.

Native species such as eels were also recovered by Fish

& Game including a longfin eel that was estimated to be at least 80 years old.

All fish were released into the Waikuku Stream, which is a tributary of the Ashley River, downstream of where they were rescued from.

The Waikuku Water Management Group recently won a Working with Nature environmental award from North Canterbury Fish & Game for their work on restoring the stream, so it was fitting that the rescued fish were released into this healthy habitat, Mr Hawker says.

Secrets and stuff at Kaponga WI

Members from Kaponga, Hawera, Inglewood and New Plymouth gathered at the home of Jo Jones, Stratford for the April meeting of Kaponga WI.

After the meeting, a happy social time during the shared lunch was enjoyed, after which Jo demonstrated skill and flair with lilies and foliage in a floral design suitable for the centre of a long table.

New programmes for 2016, which had been printed by Nan Stokes, were given out, and secret friends were revealed by Diane West.

Luncheon tickets for the Federation's 80th Birthday were purchased by several members, and the competitions for that day discussed.

Four will attend the Country Fair at Hollards Gardens, where Federation will have a stall. Several items were received for this.

It was decided that the Institute would adopt Kaponga Plunket, in support of the National Project. Gillian Frandsen and Sharyn Hurley will ask how we can help.

The thought brought smiles

from everyone, "On an Electrician's van.....let us remove your shorts"

People are still attending good movies, as indicated by the replies to the Roll Call.

President Dorothy Hughes gave the vote of thanks to conclude the day.

Competition Results: A bell. Joy Eliason 1st, Dorothy Hughes 2nd, Jo Jones 3rd.

Sultana Buns: Joy 1st, Diane 2nd, Margaret Arbuckle 3rd.

Floral Design: Gillian 1st.

Fiona Collins (Publicity)

"Let's create your business growth strategy together"
 Your only local community accounting firm



HUGHSON & ASSOCIATES
 Accounting for the future, today

Hawera - Opunake - 06 278 4169
 OPUNAKE OFFICE
 OPEN EVERY WEDNESDAY FROM 10am TO 3.30pm

HOW TO BE RUBBISH FREE



Specialising in:

- * FRONT LOAD BINS (1.5m TO 4.5m)
- * JUMBO SKIPS (9m)
- * SUPA SKIPS (6m)
- * LOW SKIPS (4m)
- * 4 x 4 BINS (1.8m)

INGRAM'S Locally owned & operated
 Hawera - Stratford - Opunake PH: 06 278 4786

We welcome your contributions
 Please send to
 editorial@opunakecoastalnews.co.nz



Chairz has a team of 3 professional upholsterers.
 We upholster Taranaki!
 Call for a free in home quote or call in store and view our fantastic range of materials and leathers.
 We cover chairs, lounge suites, squabs, cars, boats, farmbike seats and more!

Call Karl 0508 242479 or 027 441 0425
 66 Molesworth St, New Plymouth
 Easy! Call us we do the rest.

NZ FARMERS LIVESTOCK

For all your
 Livestock requirements
 Servicing the Coast

Contact
 Tim Hurley - 027 445 1167
 Bryan Goodin - 027 531 8511

Promote your events in the
OPUNAKE & COASTAL NEWS

LINER SALE May - August 2016

Standard **\$19.95*** for 4
Including SUPALINER Large Bore and Standard

Quadrant **\$24.95*** for 4
10mm Large Bore or 8mm Small Bore

PLUS 10% off Rubber Tubing

Spend \$500 or more and receive 2 Waikato Milking Systems beanies **FREE**

WAIKATO MILKING SYSTEMS

Elite Farm Solutions

ELITE FARM SOLUTIONS LTD
 23 TASMAN ST, OPUNAKE
 PH 06 761 7265 - FAX 06 761 7239

Hillcountry farmers urged to claim pole position

With winter fast approaching, Taranaki hillcountry farmers need to remember the importance of soil stabilisation measures like poplar poles, and take action accordingly. "Now's the time to order poplar or willow poles, before winter sets in," says Don Shearman, Land Services Manager for the Taranaki Regional Council, which assists with the cost of poles through its South Taranaki and Regional

Erosion Support Scheme (STRESS).

"The storm and flood event in June last year was a graphic demonstration of just how vulnerable the eastern hillcountry can be to devastating landslips. Not only did they cause extensive damage to pasture and infrastructure, but they filled waterways with sediment and made the flooding worse," he says.

"People's memories can fade as time rolls by, and new growth covers the scars and tension cracks on the hillsides. But it's important to take action to stabilise the land before the event. Soil stabilisation measures like poplar poles need a good eight to 10 years to be effective – and we can expect storms like last June's to occur more regularly."

STRESS, the Council's erosion programme, has been running for five years. And with another \$1.2 million recently approved



An example of erosion after last June's rain and flood event.

by the Ministry of Primary Industries, it will continue for another four.

As well as grants for poplar poles, the scheme delivers grants for forestry

establishment, fencing off retired land, and land use change.

Subject to criteria being met, financial assistance is available to farmers for

forestry establishment, forestry fencing, manuka reversion, poplar or willow poles to reduce erosion and retirement fencing for steeper areas.

CALF BEDDING
Now Available!

CHIPPER FINES & WOOD CHIP

H

BF HUGHES TRANSPORT
Normanby Rd, Manaia
Ph: 06 274 8671

April showers stay away

Rainfall for April was generally below normal for the month by between 25 and 95 per cent except for Toko

(116 per cent) and Stratford (104 per cent), according to Taranaki Regional Council figures.

On April 12, the Toko (Mangaehu) rainfall site recorded 68.5mm in six hours, this equates to 52 per cent of the total rainfall recorded for this site for the month. Stratford recorded 67 per cent (or 91.0mm) of the month's rainfall on April 2. Added to rainfall on April

12, 91 per cent of the rainfall recorded for the month came from these two events.

The Motunui rainfall site recorded 31.0 mm (or 26 per cent of normal for the month, with 17.5 mm of this recorded on one day (April 2). There were only seven other days that experienced rainfall, but none of these totalled more than 2.5 mm. The region as a whole only recorded rainfall between 6

and 12 days for the month.

Year to date rainfall numbers are between 63 and 105 per cent of normal, with a region average of 87 per cent. Four rainfall sites have so far recorded above normal rainfall for the year. These sites are Brooklands Zoo (102 per cent), Stratford (105 per cent), Mangaehu/Toko (103 per cent) and Kotare (102 per cent).

Corkill SYSTEMS LTD

5 TASMAN ST, OPUNAKE
FREEPHONE: 0800 107 006 PH: 06 761 7531 - FAX 06 761 7336

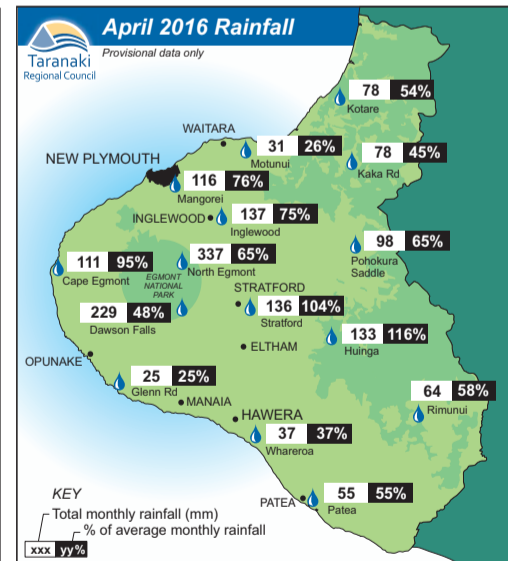
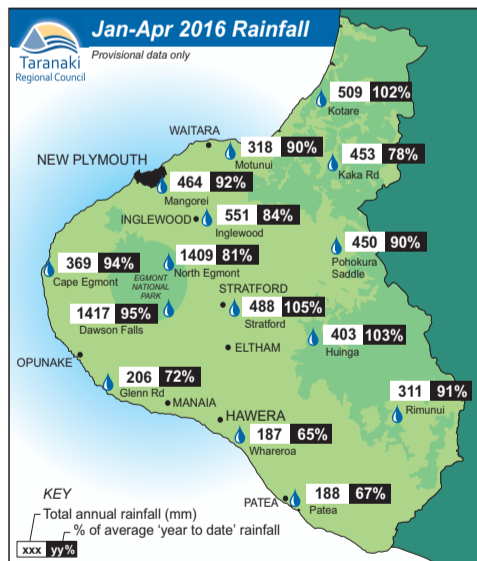
We offer a range of
**Silent Diesel and Industrial
Tractor Mount Power Generators**

There is a full range of cabling and outlet options to suit your personal requirements.

- Dials facing cab (one man operation)
- Heavy Duty Driveshaft
- Heavy Duty Construction
- 1000RPM Direct PTO Driven (no gearbox or belts)

Three Sizes to Suit all sheds:
37.5 kva 62.5 kva 93.5 kva Other sizes available on request

Check out our new website
www.corkillsystems.co.nz



What dairy can learn from kiwifruit crisis

Dairy farmers facing the industry's lowest milk price in years can learn from what the kiwifruit industry went through when Psa struck in 2010.

"We are different industries, but we are still people. One looks after animals, one looks after plants – but we are people, we have passion, we have drive,

we earn our income and live our lifestyles this way," says Ian Greaves, kiwifruit industry representative.

The kiwifruit vine disease, Psa, devastated all Gold kiwifruit orchards across the Bay of Plenty but also affected Green, with many growers only now getting their first or second crop since it occurred.

But like all industries facing adversity, the focus quickly shifted from practical aspects (managing the orchards and plants), to looking out for the people involved.

"We became aware that this disease was taking hold and we needed to look after

Continued on page 20



Peter and Larissa Kelbrick with Regan (7), Jaxon (4), and Charlotte (1).

Moving onward and upward

Peter Kelbrick says his last season has been one of the toughest he has seen in his eleven years of farming.

"It's been a bit of a battle. We had a tough winter, which was very wet, which followed into spring and calving, and we've had a fair bit of problems with eczema." He and Larissa are finishing their third season on the 80ha Oaonui farm owned by the Coastal Rugby Rugby Club where they have been 50:50 sharemilking 230 cows.

completed their first season on the farm when Coastal bought it from Anne Fleming and family.

At the end of the 2015-16 season, the Kelbricks are looking at production figures of 90,000kg/MS, four per cent down from last year. On top of that there has been the ever present concerns about the dairy payout.

"You just keep an eye on the money costs, and for any changes you get a budget done, follow through with it and weather the storm," Peter said.

It was also a year when they were among the Share farmer of the year finalists at the Taranaki Dairy Industry Awards. Next month, like others around the country, they will be moving on, in their case to the Rama Road, Auroa, and another 50:50 position. While the low payout has meant many having to settle for lesser positions, the Kelbricks will be milking 40 more cows than they did last season.

They go with the best wishes of their former employer.

"They have been really good for us," Mark Trolove of the Coastal Rugby Club said. "They're fantastic people, and we're really sure they will do well."

Both Peter and Larissa come from farming families, though their parents have all since retired from farming.

For Larissa, the shift will be a move to familiar territory, with her parents having once farmed on the Rama Road.

Peter's parents had farmed at Te Roti and Kaponga. The Coastal Rugby Club farm was their first 50:50 position. Before then they had been contract milking at Matapu. Their goal is farm ownership.

"We'll just keep chipping away, building equity and playing the land game too," Peter said.



Larissa and Peter.

FARMERS
Get your carpets cleaned with the 1st June change-over!
Call today for
FARMHOUSE CARPET CLEANING
also EXTERIOR WASH - PEST CONTROL - WINDOWS
Ph 0800 692 969
email: info@carpetcleaningservices.net.nz

D P PLUMBING
Craftsman Plumber living locally in Okato
Maintenance & Renovations
Phone Duane on
(06) 752 4897/021 023 05 021




PAUL KALIN CONTRACTING
027 498 4824
POST PEELINGS
SAWDUST
SHAVINGS
WOOD CHIP
For your Calf shed and wintering pads.
Also Silage, Hay and Straw.
Rounds, Big Squares and Conventionals

Coastal Meat PROCESSORS
www.coastalmeats.co.nz
If it's not vacuum packed, it's not right!
LICENSED SLAUGHTERMAN AND QUALIFIED BUTCHERS
Mike Barker p.06 752 4280 m. 027 752 4280
All beef vacuum packed \$29.99 (reduce freezer burn)
Welcome new Farmers to the area!
50 Carthew Street - Okato email: mike@coastalmeats.co.nz

WANT TO DO BUSINESS IN OUR AREA?
Opunake and Coastal News is distributed free to every home & business within the rural area, bounded in the north by the New Plymouth city border, extending east to Egmont Village and around to the edge of Stratford, south to Hawera city border and inland to Kaponga & Eltham.
We want to be involved with your business. Call today and discuss your marketing options with us.
OPUNAKE & COASTAL NEWS
Promote your business or event in our area, call us on:
Ph/Fax: 06 761 7016 - 23 Napier Street, Opunake or e-mail us: ads@opunakecoastalnews.co.nz



FORKLIFTS | CONSTRUCTION EQUIPMENT
• RENTAL
• SERVICE
• PARTS
• NEW & USED SALES
AGENTS FOR NILFISK FLOORCARE PRODUCTS
AB EQUIPMENT
34 Hurlstone Drive, New Plymouth
Shaun McKay - Sales Specialist
Ph (06) 757 5197 or 0800 30 30 90
www.abequipment.co.nz




Watershed agreement to end water bans

A watershed agreement in Hawke's Bay could be the start to ending irrigation bans across New Zealand.

The agreement, between a group of Twyford landowners in Hastings and the Hawke's Bay Regional Council, comes three years after a total water ban sparked grower outcry and public protests.

Under the agreement landowners in catchment area have agreed to "give to gain" by signing over their existing individual water rights to become part of a group stewardship model under a global consent.

Led by growers and supported by Horticulture New Zealand and Pipfruit New Zealand, the agreement is being heralded as an exciting step forward for leading future water irrigation management in New Zealand.

Twyford Co-operative chairman and HortNZ representative Jerf van Beek said this "watershed agreement" provides landowners, growers and farmers across the Twyford catchment with certainty and reliability of water, even in severe drought.

Hawke's Bay Regional Council resource management group manager



Twyford Grower Kevin Bayley, Hawke's Bay Regional Council resource management group manager Iain Maxwell and Twyford Co-operative chairman Jerf van Beek.

Iain Maxwell said growers can now tap into all the available allocated water, when and where it's needed, as determined by the grower group.

"It is a great environmental and economic solution that meets high expectations of the public on managing water rights within the limits outlined by the Resource

Management Act, without trade-offs or compromises.

"Our agreement could lead to a change in the way irrigators and councils work through irrigation bans throughout New Zealand," Mr Maxwell said.

Pipfruit New Zealand chief executive Alan Pollard said it showed how the irrigator and regulator could

work together for a practical and pragmatic solution.

"We now have an industry template for others to follow," he said.

Three years ago the Hawke's Bay Regional Council imposed a total water ban across Twyford when rivers reached crisis levels, sparking unprecedented grower outcry and public protest against the decision.

The Twyford Co-operative catchment, west of Hastings, covers 1292 hectares of fertile growing land for pipfruit, grapes and cropping. It has 166 water consents in the unconfined and semi confined Heretaunga aquifer.

Twyford grower and protester at the time Kevin Bayley, who is one of the first to sign into the global consent, said uniting to share water would protect all landowners.

Mr Bayley owns and leases over 200ha of

confined, semi-confined and unconfined land across the Heretaunga Plains growing fruit and vegetables.

"Why should my neighbour be penalised for a lack of water when I have more than enough water under my resource consent," Mr Bayley said.

"The 2012/13 drought brought everything to a head, Twyford had lots of water in the catchment, but under the old consenting process we couldn't get to it, in the end we were limited to the river flows which enforced a total water ban.

"We had to come together to find a workable, sustainable solution. There is still work to be done, but we've come along way," said Mr Bayley.

Senior planner and principal of Cheal consultants Cameron Drury, who developed the global consent framework and resource consent application, said it was a paradigm shift for both irrigator and the regulator and set a positive way forward for other regions.

"It gives the Twyford co-operative the tools and responsibility to manage existing water rights within the limits of the Resource Management Act," Mr Drury said.

Mr van Beek said more than half the land area is now globalised into the semi-confined zone and he was confident of gaining full uptake after the 2016 harvest season.



Growing Twyford - Twyford Co-operative chairman Jerf van Beek and grower Kevin Bayley.

0800 946 533
62A Carthew Street, OKATO
 Free delivery for orders over \$250

WholeFarms
 Vehicles for the Whole Farm

PVC/PE Compression Water Fittings
 Light weight, anti aging. These fittings attach on the outside of the pipe, reducing pressure loss and increasing flow. Also available in reducing.
 * All prices include GST

10mm-40mm	15mm-50mm	15mm-63mm	15mm-50mm
\$17.80-\$99.50	\$5.50-\$38.00	\$4.60-\$65.60	\$6.80-\$41.30

APRIL SPECIALS! IT'S MORE THAN JUST OIL. IT'S LIQUID ENGINEERING. **Castrol**

Save \$30 \$162ea	Save \$2 \$8.47ea	Save \$7 \$49ea
Save \$4 \$52ea	Save \$2 \$8.30ea	Save \$27 \$149ea

What dairy can learn from kiwifruit crisis

Continued from page 18

the people – because either we'd find solutions to Psa, but all the people had left, or the disease would wipe out the industry and leave the people," says Ian.

He says the current reduced milk price is an adversity which could have a similar impact on dairy farmers.

But while Psa hit the pockets of 2000 kiwifruit growers – taking incomes and knocking an estimated 75 percent off land values – the sector is bouncing back.

"Now the industry is buoyant, land prices are higher than before and we have a new Gold cultivar which is tolerant of Psa, with

management. The world markets have invigorated too – people are queuing up for New Zealand kiwifruit," says Ian.

"We're in a real sweet spot right now. But many of the people have been quite battered, it's still quite close to the surface."

"Look after yourself and after each other – go and see how the neighbours are doing. We all want to keep our skilled people in the industry rather than having to find new people."

Ian and Zespri chief operating officer Simon Limmer were among the speakers at the DairyNZ

farmers Forum held at Mystery Creek on May 17-18.

Simon says the kiwifruit industry's response to the Psa crisis was broad-ranging, as they sought to take decisive action to contain it and develop a recovery pathway.

"We benefited from being a cohesive industry with strong, two-way communication between Zespri and growers, and we had significant support from the government. On top of that, looking after the most-affected people by providing support, was vital."

A thundering performance

The Taranaki Thunder Women's Basketball Team finished off the Women's Basketball Championship (WBC) in style coming in the top four in the country. The WBC competition consists of three tournaments around the country. The Taranaki Thunder played in Tauranga, Nelson and had the finals in Porirua.

Knowing we were in the top six before the third and final tournament was a great achievement for our team. We came 11th last year and have a really young team, many of them playing WBC for the first time. We grew on this result by winning our first game against the Auckland Lady Hawks, which caused us to play off in the top four. The semi-final was tough against the Canterbury Wildcats. We started off well and were up 18-3 but we let it slide and lost 38-70.

Playing off for 3rd place was a close battle, only going

down by 2 to defending champions Otago (52-54). We had an awesome group of girls on and off the court, and I am very proud of the young girls who stepped up and competed against some of the best women in the country. Congratulations to Jessica Tuki who got in the Top five players of the tournament

Thanks to Angelo Hill who coached the Thunder this year. Angelo put 100 per cent into our team, and we all learnt a lot from his extensive knowledge of the game. We also couldn't have done it without our managers John Kensington and Steph Langton.

Women's team. Iritana Hohaia, Caitlin Preston, Tara Clement, Bailey Gavin, Joellen How, Jenna Kensington, Vanessa McCarthy, Eva Langton, Rebecca Trethewey, Jessica Tuki.

Vanessa McCarthy



The Taranaki Thunder Women's Basketball Team.

Be safe be seen

With winter nearing, road users are urged to take steps to be seen easily.

Be Safe, Be Seen is a region-wide campaign promoting the use of lights and hi-visibility clothing during the autumn and winter months.

New Plymouth District Council transportation manager Carl Whittleston says staff from New Plymouth District Council, Shell Todd and the police will be on the streets in New Plymouth, Opunake, Hawera and Eltham with a chocolate treat for those walkers, runners and cyclists who use lights or are wearing high-viz gear.

"For those who don't, we'll give them a bright backpack cover, a reflective armband on front and rear bike lights so they can be more easily

seen on our roads and footpaths," he says.

"We'll also have hi-viz backpack covers available for free from the Civic Centre in New Plymouth during May."

Mr Whittleston says people should never assume they have been seen by other road users. "It's for our own safety that we make it easy for others to spot us in low-light conditions or when a low sun is in drivers' eyes, and that drivers check twice to make sure the road ahead of them is clear," he says.

Drivers should think twice and look ahead when driving into sunstrike or sections of heavy shading on the road. Look twice to make sure there isn't a child waiting at a pedestrian crossing or a cyclist ahead in the light.

When cycling at night

or when visibility is poor, cyclists must have one or more steady or flashing rear-facing red lights that can be seen at night from 100m away, one or two white or yellow headlights that can be seen at night from 100m away, only one of these headlights may flash. They also need pedal retro-reflectors on the forward and rearward facing surfaces of each pedal. If the cycle does not have these, the cyclist must be wearing reflective material.

There are \$55 fines for bikes with no lights, no tail lights or no red reflectors or tapes.

We welcome your contributions
Please send to
editorial@opunakecoastalnews.co.nz

Our next issue is due out
MAY 6
Contact us today to advertise

PAY OUT'S DROPPED Want to save money?

Spread your effluent ponds on your pastures to save on fertilizer

- * PTO pump with 800m Hose no charge for set up and packing up hoses
- * 15,000 Litre Slurry Wagon * Tractors and 14 Ton Trailers
- * Drain Diggers from 3.5 Tons to 30 Tons can be arranged
- * Ground Cultivation * Roll Seeding * Direct Drilling



CHECK OUT OUR PRICES!
Call Jared now!
* payment options available

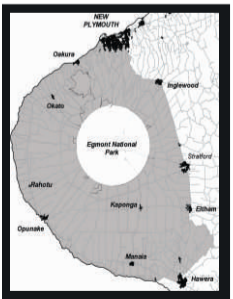
SEA BREEZE CONTRACTING LTD
Ph: Jared Gray (m) 0274 473 954

Taranaki Regional Council Approved

WANT TO DO BUSINESS IN OUR AREA?

Talk to us today!

Opunake and Coastal News is distributed free to every home & business within the rural area, bounded in the north by the New Plymouth city border, extending east to Egmont Village and around to the edge of Stratford, south to Hawera city border and inland to Kaponga & Eltham. We want to be involved with your business. Call today and discuss your marketing options with us.



OPUNAKE & COASTAL NEWS

Promote your business or event in our area, call us on:

Ph/Fax: 06 761 7016 - 23 Napier Street, Opunake or e-mail us: ads@opunakecoastalnews.co.nz



CAMPBELL CONTRACTING LTD



- DIRECT DRILLING
- HIAB TRUCK
- RACE MAINTENANCE
- ROLLER DRILLING
- GENERAL CARTAGE
- HEDGE MULCHING

NEW GRASS/GRASS TO GRASS

It's not too late to spray out an under performing pasture and direct drill a new and improved permanent pasture back in. Another option is identifying your next spring crop paddock and spraying out and drilling an Italian rye grass. This will boost your winter and early spring grass growth and help weed control for your spring/summer crop going forward.



Rusty 027 280 0743

www.campbellcontractingltd.com

Michaela 027 274 5662

A long week of target shooting

It's been a real busy week shooting with three competitions in Taranaki as well as club shoots. The first was Club visit at Oaonui on May 3. There were seven teams of four, and Eltham No1 team set the pace with consistent high scoring to beat Inglewood no1 team by a margin of 5 points, with Hawera No1 back in third place. Eltham's win was mainly due to Adrian Clark's 194.11 and Paul Longstaff's 191.7, who are quite new to team shooting. Other shooting of note was a fine 100.9 by Sam Gooding and Dave Fake 100.5, who

top scored on the night on 199.9. The second competition was for N.D.C. (National District teams Competition) In a National Telephone shoot on June 5, Taranaki Tigers were drawn against the Waikato Thoroughbreds. The Tigers open team scored well to beat the Thoroughbreds, but the composite and Junior teams were not quite up to the standard of the Thoroughbreds' of Waikato, who now lead division one. Taranaki Tigers at this point are 4th. It's early days yet, so anything can happen.

Hawera's Bruce Cameron had the top score in the competition with a fine 300.26 In the Hann Doubles at Inglewood on May 6, the most unlucky shooter would have to have been Alan Drake who had a bad round which hit the target but missed the scoring rings to cost him 10 points from what would have been a respectable score. Bruce Cameron, although back from his best was still good enough to top score with 396.26. Inglewood's Brent Moratti was second on 394.21, with Kevin Bocock,

also from Inglewood was third on 392.16. Scores were: Bruce Cameron 396.26, Dave Fake 392.15, Doug Gibson 392.16, Jason Cameron 388.18, Sam Gooding 384.16, Kevin Bocock 392.19, Hayden Andreoli 381.16, Trevor Jupp 389.17, Frank Eustace 387.15, Clare Bramley 370.5, Bob Bramley 375.10, Brent Moratti 394.21, G. Moratti 381.15, Lou Donnelly 375.8, Robert Hine 386.15, Alan Drake 373.9, Ian Hayton 349.5, B. Lawrence 382.9, Hayley. Jupp 380.12
Frank Eustace



Trevor Jupp hands the Hann Trophy to Bruce Cameron.

Top shooting by juniors augur well for the future

On May 11 in the target shooting at the Hawera Hub, a high standard was set in the juniors with a number of them getting over the 90 benchmark, and three setting personal bests. They were Christina Starr 90.1, Joe De Costa 94.2 and Matthew Peters, so close to his first

hundred with 99.4. There were only two hundreds in the seniors, one by visitor Garry Rowlands, and another by Jason Cameron, who was the top shooter of the night. Hayden Andreoli showed a return to form with consistent high scoring. Scores were: Llewellyn

Farr 86.1, 170.1, Dylan Farr 87.1, 85.1, Jackson Jennings 93.4, Alex Munro 92.1, 185.5, Dwayne Rangi 92.2, 181.4, Clayton Robinson 76.0, 83.1, Christina Starr 85.0, 82.1, 90.1, 81.1, Rico Symes Patterson 178.0, 91.2, Joe De Costa 94.2, Garry Rowlands 100.6, 98.4,

Hayden Andreoli 97.6, 196.10, 196.123, Bruce Cameron 99.7, 198.13, Jason Cameron 99.5, 199.11, Frank Eustace 99.6, 195.9, Sam Gooding 193.8, 194.10, Mathew Peters 99.4, 96.5, 95.3. Bruce Cameron went to the Wellington Open champs



A very happy Mathew Peters after shooting a personal best 99.4

and was 2nd in Master grade with 298, and in the final shoot off managed a 200 to win the open. On May 4, at the Hawera Hub, there was top shooting on full cards by 15 year old Alex Munro 98.5 and 16 year old Jackson Jennings 98.4. If they can keep improving at this rate, they could be the stars of the future. In the seniors, Bruce Cameron showed all that he is a force to be reckoned with, shooting a double hundred. Sam Gooding is just behind scoring a 199.12. Hayden Andreoli and Frank Eustace have slipped a little on expectations, and will have to find another gear with

Teams Of Ten now only a little over a week away. Scores were: Dylan Farr 87.1, 91.0 Llewellyn Farr 99gr, 83.0, Jackson Jennings 98.4, 96.4, Alex Munro 98.5, 86.2, Dwayne Rangi 88.2, Clayton Robinson 79.0, 74.0, Christina Starr 75.0, 79.0, 80.0, Rico Symes Patterson 87.1, 91.2, Joe De Costa 84.1, Ethan Costello 95gr., Aidan Kelsen 96gr., 79.0, Mathew Peters 92.3 Hayden Andreoli 193.9, 191.6, 193.9. Bruce Cameron 200.13, 197.12, Jason Cameron 99.6, 196.14, Frank Eustace 98.6, 194.7, Sam Gooding 199.12.
Frank Eustace

FOR VIEWING PHONE

STEVE 027 861 6358

JORDAN 027 890 3572



Second hand stainless steel vats, Steel outer and on feet, 3665mm x 1040mm inside x 780mm deep, \$825.00 each



Second hand steel beams/Bridge beams, 9150mm long, 18" x 6" (455mm x 150mm) with extra wide plate welded to the top, \$600.00 each

Indoor bowls title for Semple and Hamley

The Taranaki Indoor Bowling Centre played their Farm Source Hawera sponsored Open Pairs at Kapuni on Sunday with 22 teams competing and 10 qualifying for Post Section play. Quarter Final results: Trevor & Sue Bourne (Cardiff) 9, Ella Smailes & Nigel Berry (Turi) 6, Karl Hughes & Andrea Berry (Normanby) 8 Martin Harding & Bruce Thompson (Normanby) 7, Don Semple & Jenny Hamley (Otakeho) 10 Jenni & John Newland (Mangamahoe) 7, Gordon Hamley & Jane

Augustine (Otakeho) 10, Arthur Podjursky & Dave Schumacher (Cardiff) 8. In the Semi Finals Hughes 9, Bourne 5, Semple 10, Hamley 4. The Final between Hughes and Semple was a tightly contested game, which went to an extra end with Semple picking up the shot to win the title 7 - 6. This win gave Jenny Hamley twenty Centre Titles achieving her third bar to her Gold Star. Trevor & Sue Bourne gained the Trophy for the married couple going the furthest.

Snapper Fishing Competition results

The prize giving for the Snapper Fishing Competition hosted by the Opunake Boat and Underwater Club was held on May 8.

Results. Snapper. 1. Ross (Wolf) Woolford, 11.42Kg, "Ranger." 2. Scott Dymond, 11.18Kg, "The Hamma." 3. Neil Drought, 11.02Kg, "Bucket List." 4. Quentin Gray, 10.10Kg, "Camtiki." 5. David (Schultz) Cathie, 8.85Kg, "Ranger." 6. G Collis, 7.91Kg, "Thumpa." 7. Daniel Morgan, 7.39Kg, "Big Blue." 8. Craig Lock, 7.16Kg, "Big Blue." 9. Gareth (Willis) Luttrell, 6.25Kg, "Ranger." 10. Steve Corkill, 6.20Kg, "Big Blue."

Blue Cod. 1. Ross (Wolf) Woolford, 2.01Kg, "Summer Wine." 2. Mark Drought, 1.97Kg, "Bucket List." 3. Leon Van Vurren, 1.91Kg, "e-fishin-c." 4. Malcolm Sayer, 1.78Kg, "Summer Wine." 5. Jessica

Sayer, 1.76Kg, "Summer Wine."

Kahawai. 1. Lynette Collins, 2.65Kg, "Bucket List." 2. Brent Newton, 2.49Kg, "Sweet Escape." 3. B Heath, 2.47Kg, "Thumpa." 4. Mark Drought, 2.37Kg, "Bucket List." 5. Malcolm Sayer, 2.36Kg, "Summer Wine."

Gurnard. 1. Jason Ratahi, 0.88Kg, "Sweet Escape." 2. Brent Newton, 0.86Kg, "Sweet Escape." 3. Mark Drought, 0.81Kg, "Bucket List." 4. Neil Drought, 0.75Kg, "Bucket List." 4. Noel Stanley, 0.69Kg, "Bucket List."

Trevally. 1. Steve Corkill, 3.08Kg, "Big Blue." 2. Dan Morgan, 3.01Kg, "Big Blue." 3. Craig Lock, 2.30Kg, "Big Blue." 4. Ben Cathie, 2.27Kg, "Ranger." 5. Garry Northcott, 2.25Kg, "e-fishin-c."

Raffle. \$600 rod/reel combo sponsored by Collins Sports Winner - B Fergus.



Heaviest snapper winner Ross (Wolf) Woolford.



Top boat winner. Neil Drought - "Bucket List."

Woodward's FIREWOOD

Animal Bedding For Stand Off Pads Calf and Goat Sheds Wintering Barns

- Untreated ground up waste wood —
- Raw material stockpiled then ground to order —
- Pick up or delivered to your farm —
- 9m³ truck loads —
- 65m³ truck loads —

06 755 2047

124 De Havilland Drive, Bell Block • office@woodwardsfirewood.co.nz
www.woodwardsfirewood.co.nz

Promote your events in the

OPUNAKE & COASTAL NEWS

Our next issue is due out
 JUNE 3
 Phone us today to advertise
 or send your editorial and
 photos to us at
 editorial@opunakecoastal-
 news.co.nz

Twenty titles for Semple

Taranaki Indoor Bowls Centre played their "Far Open Singles at Kapuni on May 15. with 30 bowlers competing and 10 qualifying for post section play.

First Round of Play offs: Don Semple (Otakeho) 11 Ray Bailey (Merrilands) 7. Jenny Hamley (Otakeho) 12 Gordon Hamley (Otakeho) 5.

Quarter Finals: Semple 9 Hamley 6, Karl Hughes (Normanby) 12 Trevor Bourne (Cardiff) 8, Jenni Newland (Mangamahoe) 11 Ross Wright (Merrilands) 10, Scott Dimock (Pihama) 8 Ella Smailes (Turi) 6.

Semi Finals: Semple 13 Hughes 11, Dimock 12 Newland 6.

In the final, Semple

dominated the game against Dimock, winning 11 - 5. This win gave Semple 20 centre titles and his third bar to his Gold Star. Jenni Newland received the trophy for the lady progressing the furthest, and Rebecca Schrader (Riverlea) won the Junior Trophy defeating Britney Schrader (Riverlea) in a playoff 12 - 7.

Also in the first round of Inter Association, the results were Central 28 Waimate 26 South 18. Second round results were Waimate 5 Central 25 South 12. The total scores after two rounds were Waimate 61 Central 53 South 30 there are two more rounds to be played in this competition.




NEED A SHED?

"We'll See You Right"

We have extensive experience with over 3000

- * Barns
- * Implement Sheds
- * Utility Sheds
- * Stables
- * All purpose Farm Sheds

We are fast, efficient and economical.
 Free onsite visit to discuss all your requirements

STRATFORD

75 WARWICK RD, STRATFORD - 765 7800

TRADES & SERVICES

Need Extra Room?

- WINZ quotes
- Powered
- Insulated
- 3.6m x 2.4m
- So many uses
- Cabins delivered to your site

from \$55 pw



FRECALL
0800 111 344

www.roommatecabins.co.nz

RAHOTU PANEL & PAINT for trailer hire. Tandem car trailer and 6 x 4 with crate. Ph: 06 763 8462

CARPETS second hand, large selection After Disaster Ltd 223 Devon St West, NP. Phone (06) 769 9265

AGRIMEC AUTO Hydraulic hose repairs. Call at 38 Ihaia Rd, Opunake. Ph: 06 761 8999

QUALITY PAINTER AND PAPERHANGER – Ph: Bryan McNeil 027 465 8631

McNEIL DECORATING – for all your painting and decorating. Ph: Jason McNeil 027 233 4584

HEARTLAND CONSTRUCTION for alterations. Ph 027 236 7129.

BATTERIES discounted prices on trade-ins

RAHOTU PANEL & PAINT (old dairy factory, Rahotu)

PH: 06 763 8462

TRADITIONAL CHINESE ACUPUNCTURE
Nigel Cliffe
NZRA Member, ACC provider.
* Acupuncture,
* Acupressure
Tui-na (deep tissue),
* Reflexology/
Microsystem
Treatments

Opunake Business Centre
23 Napier Street
Ph: 06 763 8801 - 027 681 9524

COASTAL GIB STOPPERS. Phone Glenn 027 524 5745

HEARTLAND CONSTRUCTION for building decks. Ph 027 236 7129.

HomeWays LBP The Repilers – Ph: 06 215 7227

LAWNMOWING and section maintenance by local contractor SOS. Free quote. Ph 027 605 8437

DEBRECENY BUILDING CONTRACTORS
QUALITY CRAFTED HOMES
Registered Master Builders
* NEW HOMES AND RENOVATIONS
* DESIGN MAINTENANCE
* FARM BUILDINGS
PHONE 021 054 4845
www.dbc.org.nz

FARMBIKE SERVICES
Warea
For all your farmbike needs
PH: 06 752 8054
027 282 9338
Anytime

P.D. FLEMING LOGGING LTD
Forestry rigged & certified 33 ton loader, National Certificates in Forest Operations, Health & Safety approved. Free assessment on what your trees are worth \$\$\$
Ph: Paul
027 630 9922 or email: paulflems@gmail.com

OPUNAKE & COASTAL NEWS
LIKE ONE OF OUR PHOTOS?
Did you know that photos that are published in our paper are available to purchase?
Call in and see us today.
Ph/Fax: 06 761 7016 - 23 Napier Street, Opunake or e-mail us: ads@opunakecoastalnews.co.nz
Prices from:
Postcard size \$7 - Medium size \$10 - A4 size \$18

FOR SALE

NEW AIR RIFLES from \$79 at Collins Sports Centre.

SYSTEM WELL covers all immune areas, ie respiratory, digestive, skin, etc, buy 90 caps receive free 45 caps, \$49.90 Hardys the health shop in Centre City 067587553

FISH OIL 1500 mg 200 caps, \$19.90 at Hardys the health shop in Centre City. 7587553 Hardys the health shop in Centre City 067587553

HAIR ANALYSIS, shows vitamin, mineral and amino deficiencies, if any bacterial or viral infections, food intolerances, etc results back within the hour. \$90 at Hardys the health shop in Centre City. 7587553

PROTECT YOUR IMMUNE system and help fight off bugs. Viral ex 60 caps \$29.90 savings \$15.50 at Hardys the health shop in Centre City 067587553

WANTED TO BUY

SCRAP METAL - for all scrap metal Taranaki-wide, give us a call. Molten Metals (06) 751 5367 www.moltenmetals.co.nz

DESK suitable for office. L-Shape or otherwise. Phone: 06 761 7016 or a/hrs 06 761 8206

SITUATIONS VACANT

MAINTIENANCE PERSON 4 hours per day, 4 days a week. Apply in writing by 31 May 2016 to The Manager, Cottage Rest Home, 1 Layard Street, Opunake.

CHURCH NOTICES

Opunake & Okato Co-operating Parish CHURCH SERVICES

St Paul's Opunake Co-op & Rahotu
Opunake Cooperating Parish St Pauls, Havelock St, 9.30am every Sunday and the
Rahotu - Wesley - 11am first Sunday of the month.
Oakura - St James - 10am, 2nd & 4th Sundays.
Okato - St Pauls - 10am, 1st & 3rd Sundays.

Opunake Catholic Church
SUNDAY 8.30 am at Pungarehu (St Martins),
10am at Opunake (Our Lady Star Of The Sea).

Other areas
Manaia - Sacred Heart - 1st & 3rd Saturdays at 5pm (2nd, 4th and 5th Sat at Hawera's St Josephs).
Kaponga - St Patricks, Sunday 8.45am
ALL WELCOME

THE WAVE

Pentecostal Church 64 Domett Street, Opunake
Sunday Services 10.30am
Women's Group 10.30am Tuesday
Men's Group 7 pm Wednesday
Youth Group 7pm Friday
Come along or contact Pastor Murray
027 688 7378

ST. BARNABAS

Anglican Church 141 Tasman St, Opunake
Sunday Services 10.00am
Communion 1st, 3rd & 4th Sunday
Prayer & Praise 2nd Sunday
Every 5th Sunday all 4 churches gather for a Combined Service

PUBLIC NOTICES

NZ FARMERS LIVESTOCK

MAY DAIRY & MACHINERY SALE DATES

Monday 23rd May

Acc Kamloops Trust
David and Bev Billing, Turu Road, Rahotu
Machinery 11.15am
100 Strong fres In calf cows 12 Noon

Tuesday 24th May 11.30 am

Acc Bourke Otaraoa Trust
Bourke Family, Otaraoa Road. Sign posted from Main Road, Motunui.
80 fres fx high indexing cows
85 fres fx high indexing IC heifers
49 jersey jx IC high indexing heifers

Thursday 26th May 11.30am

Stratford Sale Yards Dairy Ring
Surplus Dairy yearling, heifer and cow sale
40 strong fres IC Ambreed Cows
40 IC fres FX heifers
Taking further entries

Friday 27th May 11am

Stratford Machinery Sale
Stratford saleyard car park
Also taking further entries

FOR MORE DETAILS contact your local NZFLL agent
Tim Hurley - 027 445 1167
Bryan Goodin - 027 531 8511

Call us today to advertise
06 761 7016
Next issue out June 3



I want to thank everybody on Mitsu's behalf for their kind words and thoughts.
Ash

OPUNAKE LIONS CLUB CASUALTY CALF COLLECTION

All Groups or Organisations wanting to collect Casualty Calves this season please contact co-ordinator:
Eric Ardern by June 10 on Ph:761 7188
or email kiridaleview@gmail.com
Collection starts July 10th. Thank you.

PUBLIC NOTICES

EGMONT COMMUNITY ARTS COUNCIL

Special Meeting
 Sunday May 22 at 1pm
 at
 Rhonda's Salon,
 Turnheads, Tasman Street, Opunake



FOURTH RATES INSTALMENT

Ratepayers are reminded that the last day for payment of the fourth instalment of rates for 2015/2016 without incurring a penalty will be Wednesday 25 May 2016.

CR Stevenson
 Chief Executive



OPUNAKE BUSINESS ASSOCIATION

Meeting 1st MONDAY OF EACH MONTH
 AT 5.30PM

Hughsons & Associates Boardroom at the
 Opunake Business Centre, 23 Napier St, Opunake
 (opposite the CoastalCare Medical Centre)

**GRADUATED? RECENTLY MARRIED?
 OR JUST PLAIN TOO CUTE NOT TO SHARE?**

Opunake and Coastal News would love to share your photos with our readers!



OPUNAKE & COASTAL NEWS



What's On Listings

JONATHAN YOUNG

MP for New Plymouth
 Need to speak with your local MP?
 Monthly clinics being held in Opunake, 3rd Monday of each month. 10am-12pm at the Opunake Business Centre. Please email or phone to book a time.

OPUNAKE BUSINESS ASSOCIATION

Meet on the 1st Monday of each month.

OPUNAKE COUNTRY MUSIC CLUB

First Sunday of each month at the Opunake Town Hall, 1-4pm. All welcome

SCHNITZEL NIGHT

Every Wednesday at the Stony River Hotel, Okato

COASTALCARE - LISA KEEN AUDIOLOGY

Wednesdays 9am - 5pm, for an appointment call 027 591 4222 - 0800 555 676

SURF INN

Every day free pool. Every Friday free sausage sizzle from 5. Every Sunday afternoon. Pool comp

COASTAL YOUNG FARMERS

Meet 2nd Thursday of every month at 7pm at the Okato Bowling Club.

TARANAKI COUNTRY MUSIC HALL OF FAME, MANAIA

Running every Thursday night from 7.30pm, 11 Surf Highway, South Road, Manaia.

EGMONT EUCHRE CLUB

Meets every Thursday 1pm at the Opunake Bowling Club

CAPE EGMONT HISTORIC LIGHT & MUSEUM

Open 11am - 3pm weekends, Bayly Road, Warea.

TODD ENERGY AQUATIC CENTRE

Family fun times 10.30am to 4.30pm.

COASTAL SINGERS

7pm every Thursday night. Contact 761 8654

ELTHAM BUSINESS ASSOCIATION FRIDAY MARKETS

8am to 1pm, Carpark of Touch Point, High Street, Eltham.

PERCY THOMSON GALLERY

Stratford Art Society Members Exhibition. April 29 - May 22.

THE VILLAGE GALLERY, ELTHAM

Daring to Differ - 9 May - 3 June 2016.

BUTLERS REEF

Friday May 20, 'SLAM'. Open Muso afternoon Sunday June 12

PUKE ARIKI EXHIBITION GALLERY

Voyage to the Deep - Opening Day Saturday May 21
 Exhibition on 21 May - 16 October 2016. Refer advert.

EGMONT COMMUNITY ARTS COUNCIL

Special Meeting, Sunday May 22 at 1pm at Rhonda's Salon, Turnheads, Tasman Street, Opunake

OPUNAKE PLAYERS INC

Present Inspector Drake and the Perfekt Crime. A comedy by David Tristram. Showing 24th - 28th May 7.30 pm, Sunday 29th May 2 pm at The Lakeside Playhouse.

Tickets \$20 at Sinclair Electrical Ltd Opunake from 9th May

RAHOTU PLAYCENTRE 50th JUBILEE OPEN DAY

Thursday May 26, 9.30am - 12.30pm at the Rahotu School.

Meet & Mingle, Friday May 27 at 6.30pm at the Coastal Rugby Clubrooms.

Refer advert for full details.

NEW PLYMOUTH GIRLS HIGH SCHOOL

Scotlands Hostel, OPEN DAY & Interviews for 2017

Friday 27th May 2016 - 9am - 3pm

TARANAKI BRIDE OF THE YEAR 2016

Saturday May 28, accepting entries now

SURF INN, OPUNAKE

Darkwater Album Release - The Palinoia Tour, Friday

3rd June from 8.30pm. Free entry. Refer advert.

STRATFORD SINGERS

June 11-12. Music of the 40s and 50s. Stratford Singers, The Great Taranaki Steam Band, Words With the Birds with Bryan Vickery. TET Kings Theatre, Stratford. Refer advert for full details.

Traditional Contemporary



At last an Architect designed home on your site for \$450K* Total cost Move in! *Other Packages from \$350,000

SAUNDERS ARCHITECTS 128 Vivian St, New Plymouth
 Ph 06 759 7430 - info@saundersarchitects.co.nz



OPUNAKE BUSINESS ASSOCIATION
 Meeting 1st Monday of each month at 5.30PM
 Hughsons & Associates Boardroom at the Opunake Business Centre, 23 Napier St, Opunake

OPUNAKE & COASTAL NEWS

FARM SHEDS

BUILDLINK KITSET SHEDS



2 bay kitset shed \$5,407+GST

Various sizes and options See www.buildlinkbuildings.co.nz for details

VALUE SHEDS



Top quality custom built sheds to your specs

FREE ON SITE MEASURE AND QUOTE

See us for the **RIGHT PRICE** and **EXPERT ADVICE**

VALUE BUILDING SUPPLIES

NEW PLYMOUTH
 1 Katere Rd. Ph 759 7435
 INGLEWOOD James St.
 FREEPHONE 0800 245 535
www.valuebuilding.co.nz



Opunake Players Staging Classic English Farce

When a genius commits a murder, the plan is perfect. But is it foolproof? Inspector Drake is back to face his greatest-ever challenge. Who is the mysterious Doctor Short, and why did he marry a warthog? Has he murdered his fourth wife - or did she murder him first?

Wendy Smith directs the hilarious David Tristram comedy whodunnit "Inspector Drake And The Perfekt Crime" and has an eager young cast ready to entertain. Brody Chapman takes the title role of Inspector

Drake, ably assisted by Ben Morgan as Sergeant Plod. William Andersen-Gardiner pits his genius against Drake in a protracted game of chess as Doctor Short, while Ariana Millar and Honey Rose Hutchins add glamour and intrigue to the stage. Elaine Spencer makes a brief yet striking appearance as the short-lived Mrs Short. Some of the cast will be leaving the area next year to further either career or education, so Wendy was keen to give them another opportunity to exercise their already proven theatre skills. Opunake

Players have produced several of Tristram's plays in the past, and they never fail to raise a laugh. This production boasts an Alan Love designed set and an abundance of peculiar plot particulars. Come and see if you can solve the mystery before the intrepid Inspector makes his own conclusion.

The season will open on Tuesday May 24 at the Lakeside Playhouse in Opunake, and run through to finish with a matinee at 2pm on Sunday 29th. Tickets are \$20, available at Sinclair Electrical.

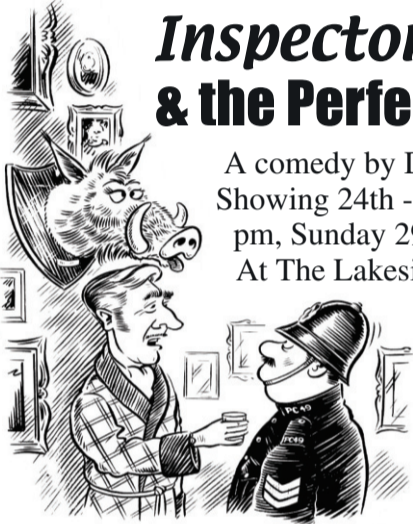


Right: The cast of Inspector Drake and the Perfekt Crime. Back row: Ben Morgan, William Andersen-Gardiner and Brody Chapman. Front row: Honey Rose Hutchins and Ariana Millar (left). Tickets on sale now at Sinclair Electrical, Opunake.

Opunake Players Inc. present....

Inspector Drake & the Perfekt Crime

A comedy by David Tristram
Showing 24th - 28th May 7.30 pm,
Sunday 29th May 2 pm
At The Lakeside Playhouse



Tickets \$20 at Sinclair Electrical Opunake Ph: 761 8084 from 9th May

100 TASMAN ST, OPUNAKE PH: 761 8213

The Club Hotel Opunake

Book in your private function
Pool Tuesdays
Poker Wednesday & Thursday

Dine in or Takeaway Meals available
- TAB -

Positively dashing

The musical My Fair Lady is famous for songs such as Wouldn't it be Lovely, I could have Danced all Night and With a little bit of Luck, but the number that stands out is the Ascot Gavotte. One in a medley of songs to be performed by the Stratford Singers in their June 11 and 12 concerts 'It's Showtime' music from the shows of the 40's and 50's.

The clipped diction and perfectly poised emotionless spectators at the Ascot op'ning day are typical



Stratford Singers will be performing on June 11 and 12.

of the stuffy upper class as portrayed in the Ascot Gavotte. A superb song from a super show.

A great range of music is being prepared from this era, the show is sure to entertain and delight, and will also feature, once again, crowd favourites The Great Taranaki Steam Band and Words with the Birds.

Last year's Anzac/Gallipoli concert was a sellout success. Look for our advertisements and posters detailing dates and times, ticket sales and venue.

IT'S SHOWTIME!

Music of the 40's & 50's

Stratford Singers
The Great Taranaki Steam Band
Words With the Birds

with Bryan Vickery

ON STAGE: TET KINGS THEATRE, STRATFORD
Saturday, June 11, 7.30 pm
Sunday, June 12, 2 pm

TICKETS: \$20 + booking fee
STRATFORD I-SITE: 06 765 6708
HAWERA I-SITE: 06 278 8599
PIANOWORKS: 06 758 3114

hokonui

What's On 

SLAM

GREAT COVERS BAND! No cover charge
Friday May 20.

NEW MENU OUT NOW

Open Musicians afternoon also on Sunday, June 12

1133 Main South Rd, Oakura
Phone 06 752 7765 - www.butlersreef.co.nz

Workshops plant practical ideas

A series of free workshops promises to bury the gung-ho gardening approach and prune hours off your gardening time.

The three Taranaki Regional Council workshops, to be held over the next few weeks at Hollard Gardens in Kaponga, will be presented by local gardener Dee Turner – a woman who never weeds.

She doesn't need to, because the small green invaders can't get a foothold on her property – Dee's the Permaculture Educator's Group and has more gardening knowledge and practical tips than you can shake a carrot at.

"I think a lot of people look out at their garden and think, 'it's just too much work', but with good design it's not such an onerous task. If you were spending 10 hours a week growing vegetables for the family, you can get it down to two. It's about time-saving," she says.

Dee classifies permaculture as "designing with nature," and says it's about carefully planning a garden space that provides the least amount of work for the most output.

Her "Beginners' guide to horticulture in the home garden" workshops will each be held from 2pm to 4pm, and can be attended as a series or



Taranaki Regional Council will be holding three workshops over the coming weeks at Hollard Gardens.

individually.

The first, on May 22, will be "an introduction to permaculture design and how it applies to you".

Those attending will learn about permaculture and why it started, plus its ethics and principles, then the practical stuff – considering uses for each specimen, and zoning according to usage.

"We'll look at design and you need to put a few things on paper before rushing out to the shop. When you're thinking of starting your

garden or orchard for the first time you tend to be a bit gung-ho about it. Later you'll think – "oh, that tree is in the wrong place" or "I should have put that plant there".

The second workshop, on May 29 details how chooks, worms, soil and composting fit into permaculture design. This will be a practical session covering building soil, "which will be about 50 times more productive than bringing in top soil".

New top soil is often full of weeds, so permaculture

gardeners instead use mulch, worm farms, compost, and "chook tractors".

"The chook house is built of top of your garden bed. When your crop is finished and you've got weeds and old mulch, the chooks eat the weeds and fertilise ready for the next crop. The bed they've just prepared, you plant straight into – mulch again and you're done. No weeds."

The third workshop, on Sunday, June 5, is on companion plants and supporting species within your permaculture plan.

This covers "plant guilds" that are based around orchard trees and which give them nutrients; along with companion planting and green manure – crops that are chopped down to put carbon, nitrogen and nutrients into the soil.

The series will be wound up with advice on – weeds.

"Weeds are indicators of soil condition. We need to look at our weeds to see what they're telling us and I'll give people strategies to get rid of ones that they don't want."

The cost of all these pointers? Nothing.

People will just need to take along their wet weather gear and gumboots, says Dee.

NZ FARMERS LIVESTOCK

Kamloops Trust

Dave & Deb Billing

Turu Road, RD 31, Opunake

Dairy No 4-2368

MONDAY 23 MAY 2016

Machinery at 11.15am

Cattle 12 noon

Comprising of approximately

100 Friesan Fres x in calf cows

Approx 45 rising 1 year old fres heifers

Contact

Bryan Goodin - 027 531 8511



Rod and Lynne Pulford are back as Managers

Come on up & try our new Dinner Menu

Stratford Mountain House

Phone: 06-765 6100



CoastalCare Health and Community Centre

Some of the regular services we currently have running are:

FOODBANK

Tuesday's and Wednesday's 10am - 2pm, providing basic food parcels for those in need.

BUDGET ADVICE

advice and assistance with budgets and finances, every second Wednesday.

TARANAKI PODIATRY

every 3rd Tuesday - specialised foot care for all ages in clinics

TUI ORA

* Haumiri massage koha based - every third Friday

* Alcohol and Drug Counselling - weekly one to one counselling

SIAS HOFFMAN

one to one counselling for any need, specialising in anxiety, depression and relationship therapy.

DAIRY NZ

once a month course - delivers industry training to those in the Dairy Industry

PRIMARY ITO

milk quality courses, a one day course looking at how to get the best quality milk production.

COMMUNITY CORRECTIONS

weekly - supporting offenders to help them address their offending and gain skills that will help them lead a crime free life.

Also permanently residing in the building are:

- OPUNAKE PHARMACY
- OPUNAKE MEDICAL CENTRE
- ST. JOHNS AMBULANCE
- PLUNKET
- HEALTH BOARD SERVICES.



CONTACT: ARETHA, MANAGER, on 761 8488

Opunake - MOVIES - BOUTIQUE THEATRE – HIRE
For information email: everybodystheatre@gmail.com or facebook- Everybody's Theatre
www.everybodystheatre.co.nz

Lollies, popcorn, drinks, ice-creams, chocolate bars, tea/coffee for sale

Adults \$10, Students 4-16 \$8 Under 4 Free Senior Citizens \$8. No Eft-pos

	The Greenstone M A young South African woman leaves everything behind and travels to New Zealand on a quest to find her father. Will she find him? Friday 20 May 7pm Wednesday 25 May 1pm		My Big Fat Greek Wedding 2 PG13 94min Comedy Romance A Portokalos family secret brings the beloved characters back together for an even bigger and greener wedding. Saturday 21 May 7pm
	Whiskey Tango Foxtrot 112min Comedy War In 2002, cable news producer Kim Barker decides to shake up her routine by taking a daring new assignment in Kabul, Afghanistan. Sunday 22 May 7pm		The Jungle Book PG 105min Adventure Drama Family The man-cub Mowgli flees the jungle after a threat from the tiger Shere Khan. Saturday 28 May 1pm
	Robinson Crusoe: The Wild Life PG 90min Animation, Adventure, Comedy Tuesday, an outgoing parrot lives with his quirky animal friends in paradise. Saturday 21 May 1pm Saturday 4 June 1pm		The Brothers Grimsby 83min Action, Comedy R16 A new assignment forces a top spy to team up with his football hooligan brother. Wednesday 25 May 7pm Saturday 28 May 7pm
	Eddie the Eagle PG13 106min Biography, Comedy, Drama The notoriously tenacious British under dog ski jumper who charmed the world at the 1988 Winter Olympics. Friday 27 May 7pm Wednesday 1 June 1pm		Captain America: Civil War Action, Fantasy, Science Fiction, Thriller, Blockbuster 2hr 27mins M Violence Political interference in the Avengers activities causes a rift between former allies Captain America and Iron Man Sunday 29 May 7pm Friday 3 June 7pm

Florence Foster Jenkins BOUTIQUE For June 5
\$25 includes wine/beer tasty treats
come along at 6:30 to get your seat and treats before the movie starts
TICKETS AVAILABLE FROM SINCLAIR REFRIGERATION & ELECTRICAL
Tickets must be prepurchased for Boutique

Wednesday	Friday	Saturday	Sunday
	20 Greenstone 7pm	21 Robinson Crusoe 1pm My Big Fat Greek Wedding 2 7pm	22 Whiskey Tango Foxtrot 7pm
25 The Greenstone 1pm The Brothers Grimsby 7pm	27 Eddie the Eagle 7pm	28 The Jungle Book 1pm The Brothers Grimsby 7pm	29 Captain America 7pm
1 June Eddie the Eagle 1pm The Man who knew Infinity 7pm	3 June Captain America Civil War 7pm	4 June Robinson Crusoe 1pm The Man who knew Infinity 7pm	5 June * Boutique* Florence Foster Jenkins 7pm

Lazza from America a valuable asset

It's remarkable how life's journey can guide you across to the other side of the world, only to find yourself in a rural setting such as Opunake, and connecting in an exceptional way with others who share a mutual love of music.

Born in the U.S.A, and now based in New Plymouth, this fair headed softly spoken gentleman with a pleasant American accent, and likeable personality, confided, he is a father of seven, with four of his children having Kiwi



Larry Hastings at the Opunake Music Workshop

ancestry. Larry Hastings, added a new and exciting dimension to the Opunake Music Workshop on Tuesday May 10. Lazza, as he is nicknamed, rocked into the group demonstrating a unique ability to provide an embellishing piano accompaniment to the evening's performances, adding his musical expertise to the mix, along with local musicians. Lazza was seen stomping his feet and really exerting loads of energy into his performance. A multi instrumentalist, his

versatility extends to guitar, banjo, mandolin, and violin. He said that as a young lad he began playing the trumpet in marching bands, then progressed to piano, teaming up with other professional and well-known Americans. This is where he learnt to play various styles of music, including Jazz, Dixie, and Rock.

Lazza is enthusiastic about supporting the Music Workshops in Opunake, and contributing his talents to helping young and adult musicians. He is an asset to the group.

Anyone who would like to develop their talents further with expertise and training from Lazza and other regular professional musicians, please join us at 7:30PM on Tuesday May 24 at the Catholic Church lounge, 33 Whitcombe Rd, Opunake.

Anne Montgomery



Calling all Entertainers

7:30pm Tuesday, 24th May 2016
Young, old, amateur, professional.

Are you a musician, singer, actor, poet or dancer?
Do you have a talent that can entertain?

Colour Conversions (Video, Audio and Graphic Productions) are holding regular performance driven evenings that will result in creating an entertainment platform for covers and original performances.

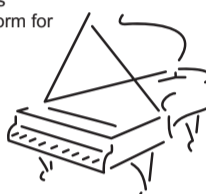
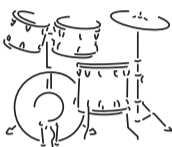
Join us for the beginning of a new opportunity - be part of future live shows.

Bring your own instruments, basic amplification will be provided.

Call us on 027 897 8941 for details. The Fourteenth gathering - 7:30pm Tuesday 24th May 2016
Catholic Church, 33 Whitcombe Road, Opunake.

Web Site www.colourconversions.com

Colour Conversions Limited
Video, Audio and Graphic productions
027 897 8941



KICKSTART YOUR CAREER IN AGRICULTURE

FEES FREE



NEW ZEALAND CERTIFICATE IN PRIMARY INDUSTRY SKILLS (LEVEL 2)

This fees free programme is an introductory qualification for those wanting to gain a 'taste' of the farming industry. It has an emphasis on the general skills essential for working in the industry and is therefore also suitable for people already working in the sector who need to up-skill.

Skills covered in this programme include Animal Handling, Fencing, Ag Vehicles and Work Safety.

START DATE: 30th May 2016

DURATION: 12 weeks rolling over intakes

DELIVERY LOCATION: Rahoitu (Transport provided)

ENQUIRE NOW! 0800 TARATAHI

www.taratahi.ac.nz

taranaki@taratahi.ac.nz



OPENING DAY

Saturday 21 May 2016, 10am - 1pm
Puke Ariki Museum Foyer

Be the first to explore Puke Ariki's underwater exhibition, *Voyage to the Deep*.

Take the controls of a fantasy submarine, explore a shipwreck, or dress up as Captain Nemo!

On opening day only, come and create a traditional Māori fish hook and use its magnetic power to catch a collection of sea creature badges. All welcome!

WANT TO DO BUSINESS IN OUR AREA?

Opunake and Coastal News is distributed free to every home & business within the rural area, bounded in the north by the New Plymouth city border, extending east to Egmont Village and around to the edge of Stratford, south to Hawera city border and inland to Kaponga & Eltham.

We want to be involved with your business. Call today and discuss your marketing options with us.

OPUNAKE & COASTAL NEWS

Promote your business or event in our area, call us on:
Ph/Fax: 06 761 7016 - 23 Napier Street, Opunake
or e-mail us: ads@opunakecoastalnews.co.nz